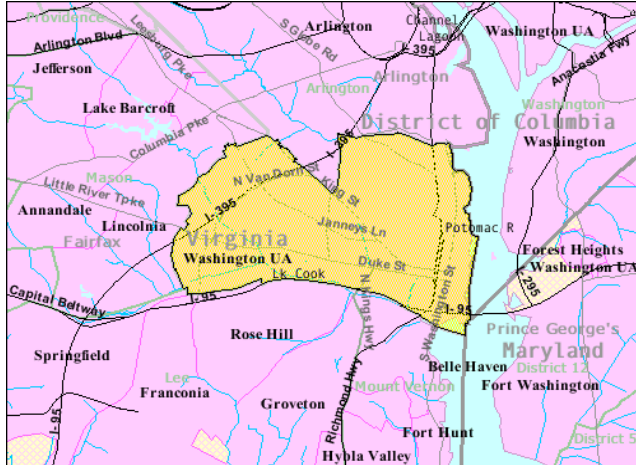


A Quick Look at...

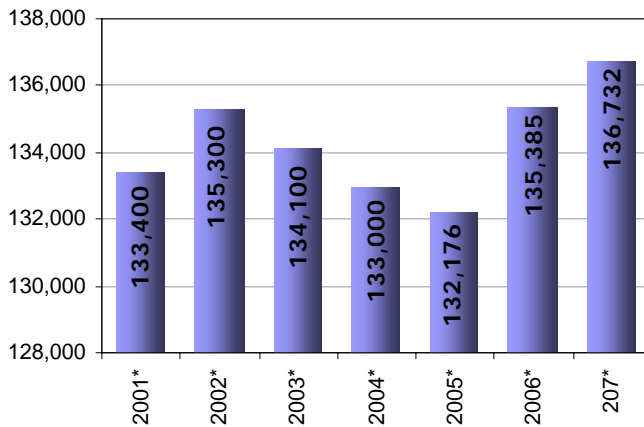
City of Alexandria, Virginia



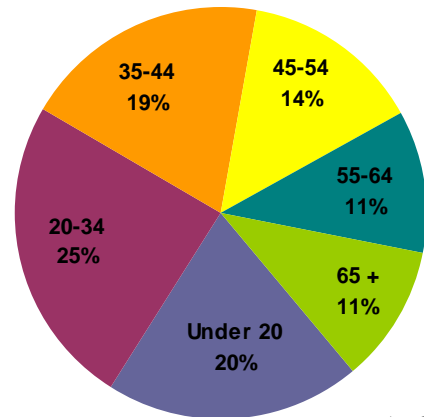
U.S. Census Bureau

Location: 38.82100 N, 77.08617 W
 Size: 15.75 sq. miles
 Population: 136,732
 Population Density: 8,681.4 people/sq. mile

Population



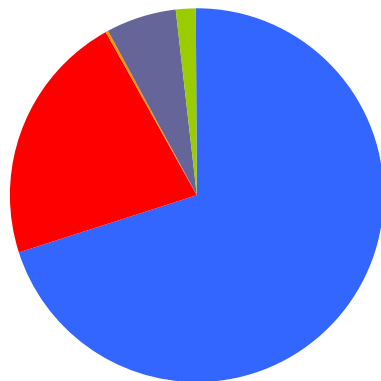
Population by Age



As of 2007

Median Age: 36.3

Population By Race



As of 2007

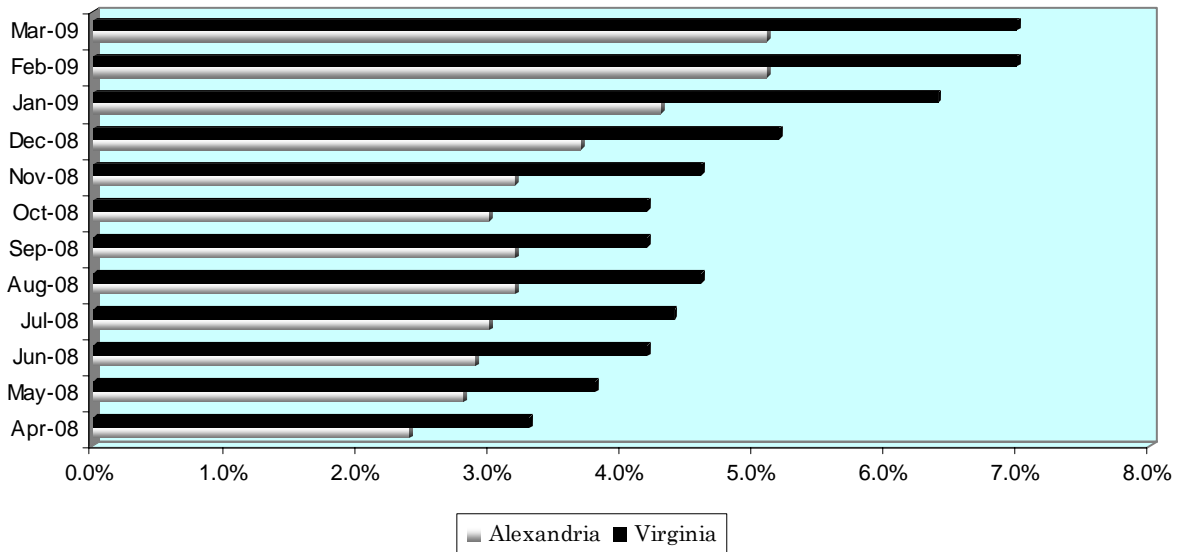
A Quick Look at...

City of Alexandria, Virginia

Housing Statistics*			
Value (owner occupied)		Gross Rent (renter occupied)	
16,836 units		37,141 units	
Less than \$50,000	0.2%	Less than \$200	2.9%
\$50,000 to \$99,999	3.0%	\$200 to \$299	1.4%
\$100,000 to \$149,999	12.8%	\$300 to \$499	2.4%
\$150,000 to \$199,999	16.3%	\$500 to \$749	22.4%
\$200,000 to \$299,999	30.1%	\$750 to \$999	40.2%
\$300,000 to \$499,999	27.8%	\$1,000 to \$1,499	24.0%
\$500,000 to \$999,999	8.6%	\$1,500 or more	5.5%
\$1,000,000 or more	1.2%	No cash rent	1.1%
Median Value: \$252,800		Median Rent: \$861	

* As of 2000 Census

UNEMPLOYMENT RATE: April '08 – March '09



Educational Attainment *

(percentage of population 25 and older who have earned)

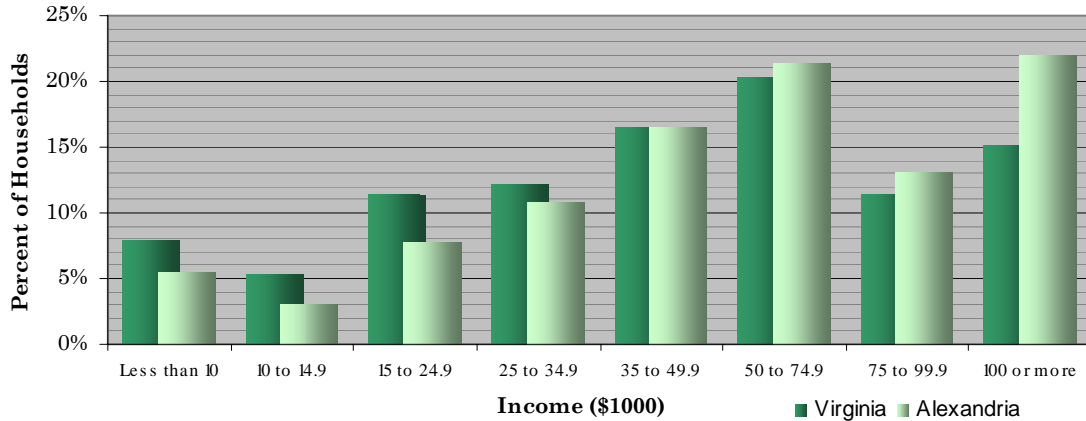
No Diploma	High School Diploma (or GED)	Some College (no degree)	Associate's Degree	Bachelor's Degree (or higher)
13.2%	12.7%	15.5%	4.4%	54.3%

* As of 2000 Census

A Quick Look at...

City of Alexandria, Virginia

Household Income (2000 Census)



Median Income (2007): \$59,575 Virginia \$78,767 City of Alexandria

Employment by Sector (3 rd Quarter 2008)		Employment by Occupation (2000 Census)	
Natural Resources and Mining	0.0%	Management and professional	23.3%
Construction	3.6%	Service	14.7%
Manufacturing	1.5%	Sales and office	22.0%
Trade, Transportation and Utilities	13.8%	Farming, fishing, and forestry	2.9%
Information	2.4%	Construction	14.2%
Financial Activities	6.4%	Production, transportation, and material moving	22.9%
Professional and Business Services	25.4%		
Education and Health Services	11.2%		
Leisure and Hospitality	9.6%		
Other Services	11.1%		
Public Administration	14.9%		
* Information unavailable		Total employment: 101,310	

Average Weekly Wage By Sector
(3rd Quarter 2008)

