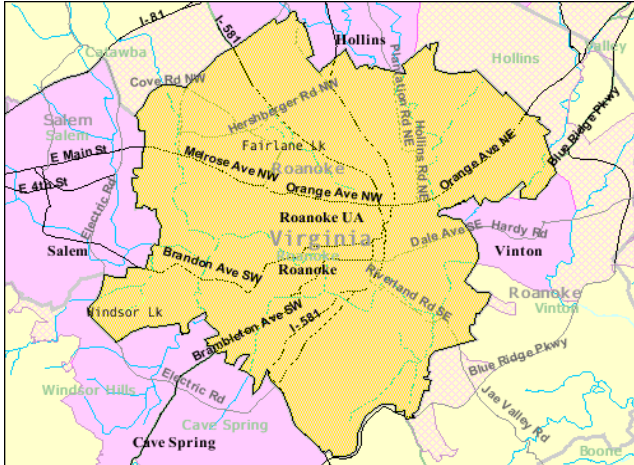


# A Quick Look at...

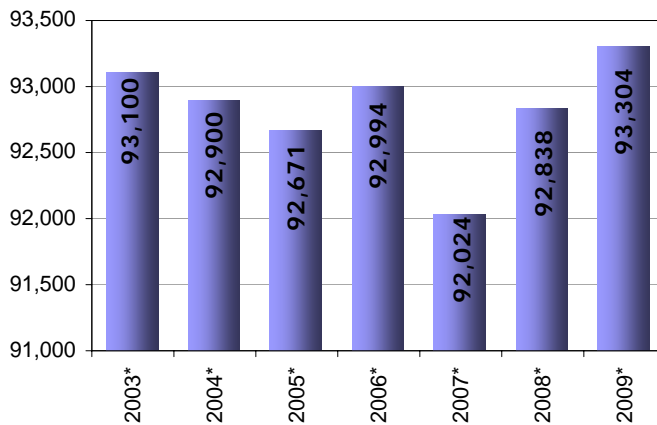
## City of Roanoke, Virginia



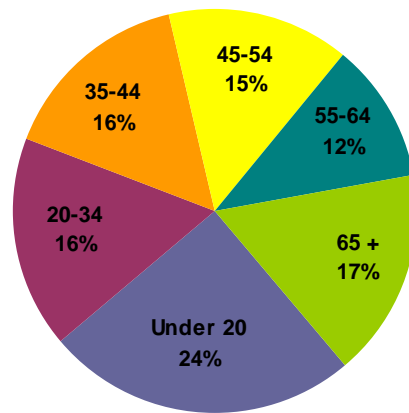
U.S. Census Bureau

Location: 37.27840 N, 79.95839 W  
 Size: 42.57 sq. miles  
 Population: 93,304  
 Population Density: 2,191.8 people/sq. mile

### Population



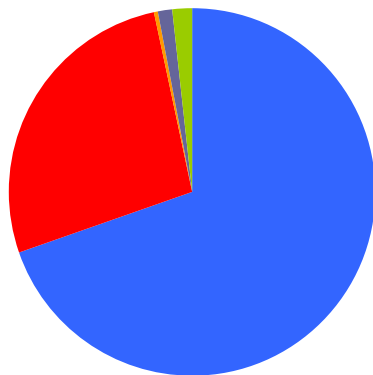
### Population by Age



As of 2008

Median Age: 39.3

### Population By Race



As of 2008

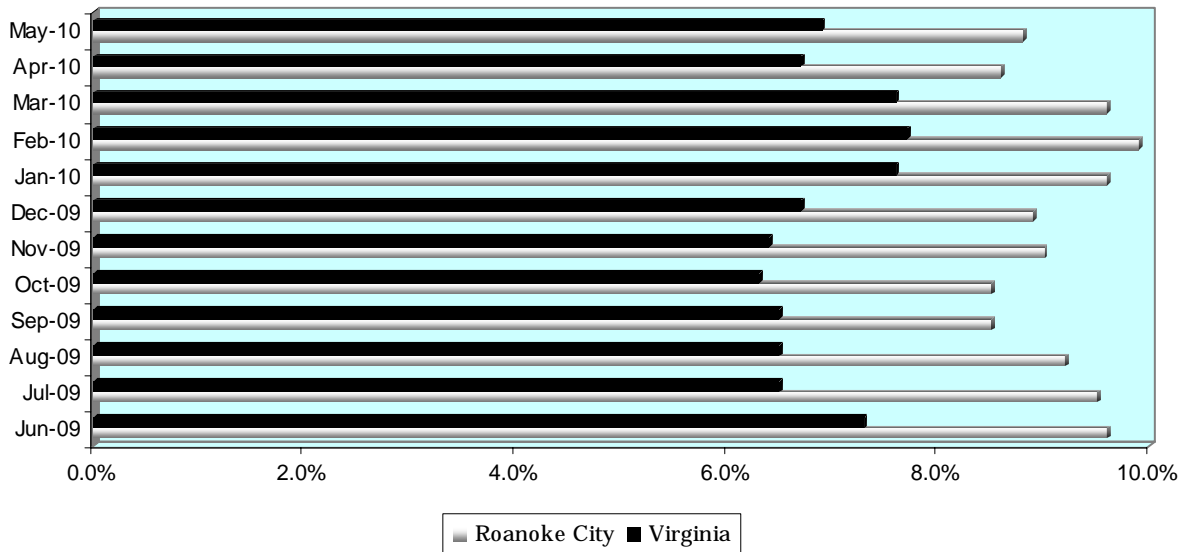
# A Quick Look at...

## City of Roanoke, Virginia

Housing Statistics*			
Value (owner occupied)		Gross Rent (renter occupied)	
24,782 units		17,129 units	
Less than \$50,000	3.1%	Less than \$200	5.6%
\$50,000 to \$99,999	27.2%	\$200 to \$299	4.9%
\$100,000 to \$149,999	34.7%	\$300 to \$499	20.8%
\$150,000 to \$199,999	16.8%	\$500 to \$749	35.6%
\$200,000 to \$299,999	10.4%	\$750 to \$999	19.4%
\$300,000 to \$499,999	6.0%	\$1,000 to \$1,499	7.1%
\$500,000 to \$999,999	1.7%	\$1,500 or more	2.5%
\$1,000,000 or more	0.2%	No cash rent	4.1%
Median Value: \$123,100		Median Rent: \$616	

\* As of 2006-2008 American Community Survey

### UNEMPLOYMENT RATE: June '09 -- May '10



### Educational Attainment \*

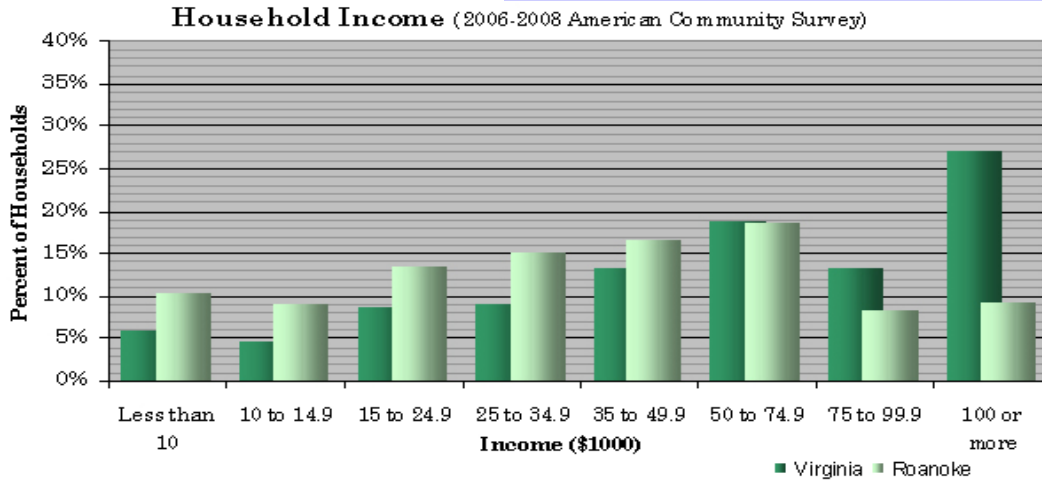
(percentage of population 25 and older who have earned)

No Diploma	High School Diploma (or GED)	Some College (no degree)	Associate's Degree	Bachelor's Degree (or higher)
19.0%	30.5%	21.8%	8.0%	20.7%

\* As of 2006-2008 American Community Survey

# A Quick Look at...

## City of Roanoke, Virginia



Median Income: \$61,044 Virginia \$37,215 City of Roanoke

Employment by Sector (4 <sup>th</sup> Quarter 2009)		Employment by Occupation (06-08 ACS)	
Natural Resources and Mining	0.1%	Management and professional	28.6%
Construction	6.0%	Service	18.4%
Manufacturing	5.7%	Sales and office	28.6%
Trade, Transportation and Utilities	24.0%	Farming, fishing, and forestry	0.0%
Information	1.6%	Construction	7.6%
Financial Activities	5.2%	Production, transportation, and material moving	16.7%
Professional and Business Services	15.1%		
Education and Health Services	24.3%		
Leisure and Hospitality	9.9%		
Other Services	3.6%		
Public Administration	4.5%		
* Information unavailable		Total employment: 66,205	

