

# A Quick Look at...

## Craig County, Virginia



Location: 37.48696 N, 80.21580 W

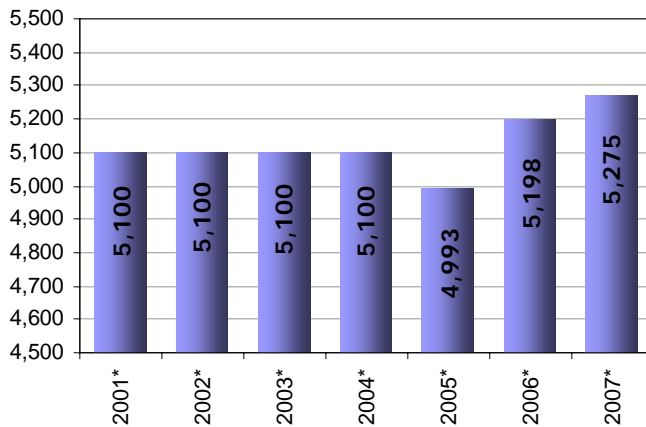
Size: 336 sq. miles

Population: 5,275

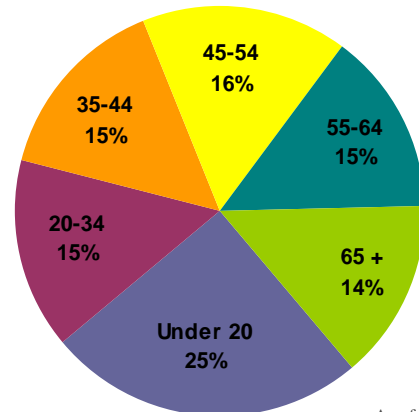
Population Density: 15.7 people/sq. mile

Towns & Communities:  
Abbott, New Castle, Paint Bank

### Population

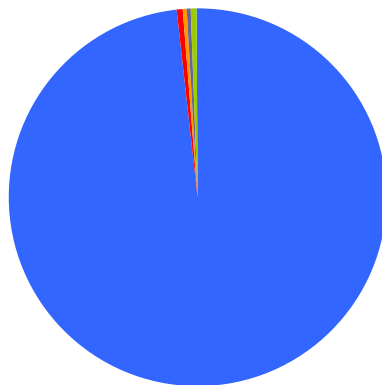


### Population by Age



As of 2007

Median Age: 40.7



### Population By Race

- 98.3% White
- 0.6% Black/African American
- 0.2% American Indian/Alaska Native
- 0.3% Asian
- 0.0% Native Pacific Islander
- 0.6% Some other race

As of 2007

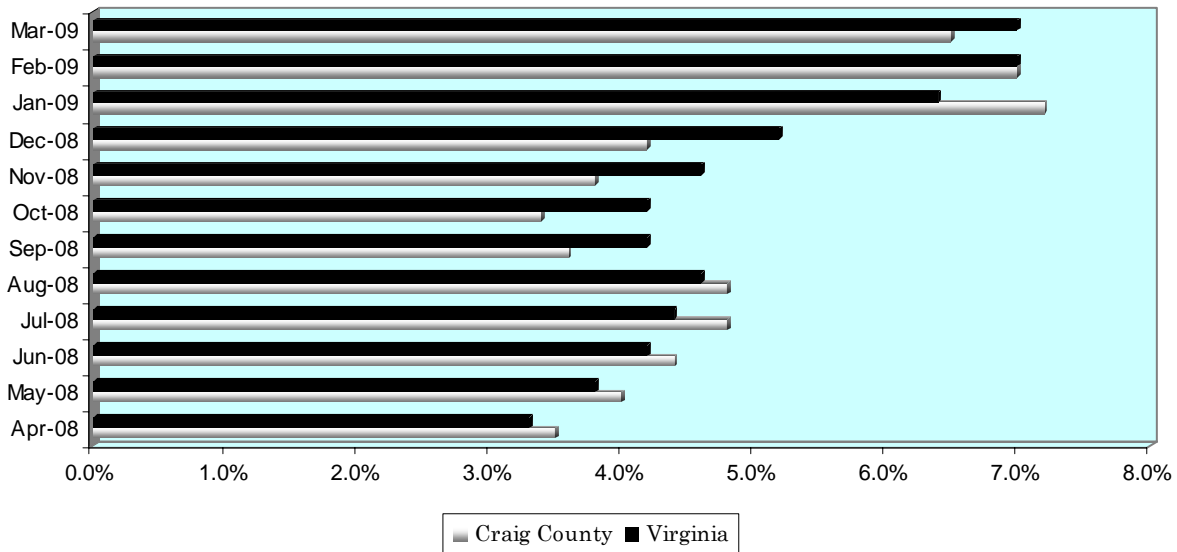
# A Quick Look at...

## Craig County, Virginia

Housing Statistics*			
Value (owner occupied)		Gross Rent (renter occupied)	
930 units		350 units	
Less than \$50,000	12.9%	Less than \$200	14.3%
\$50,000 to \$99,999	46.9%	\$200 to \$299	6.0%
\$100,000 to \$149,999	23.9%	\$300 to \$499	53.4%
\$150,000 to \$199,999	12.5%	\$500 to \$749	10.3%
\$200,000 to \$299,999	2.3%	\$750 to \$999	0.0%
\$300,000 to \$499,999	1.4%	\$1,000 to \$1,499	0.3%
\$500,000 to \$999,999	0.0%	\$1,500 or more	0.0%
\$1,000,000 or more	0.2%	No cash rent	15.7%
Median Value: \$85,400		Median Rent: \$404	

\* As of 2000 Census

### UNEMPLOYMENT RATE: April '08 – March '09



### Educational Attainment \*

(percentage of population 25 and older who have earned)

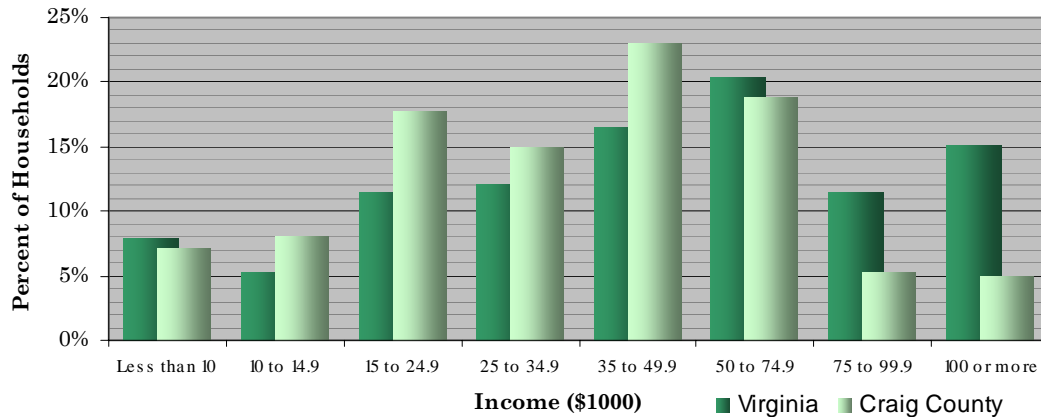
No Diploma	High School Diploma (or GED)	Some College (no degree)	Associate's Degree	Bachelor's Degree (or higher)
23.5%	40.8%	21.3%	3.7%	10.8%

\* As of 2000 Census

# A Quick Look at...

## Craig County, Virginia

### Household Income (2000 Census)



Median Income (2007: \$59,575 Virginia \$48,319 Craig County)

Employment by Sector (3 <sup>rd</sup> Quarter 2008)		Employment by Occupation (2000 Census)	
Natural Resources and Mining	4.0%	Management and professional	23.3%
Construction	5.0%	Service	14.7%
Manufacturing	0.6%	Sales and office	22.0%
Trade, Transportation and Utilities	30.7%	Farming, fishing, and forestry	2.9%
Information	0.6%	Construction	14.2%
Financial Activities	8.0%	Production, transportation, and material moving	22.9%
Professional and Business Services	3.9%		
Education and Health Services	24.3%		
Leisure and Hospitality	9.6%		
Other Services	1.1%		
Public Administration	12.2%		
* Information unavailable		Total employment: 646	

### Average Weekly Wage By Sector (3rd Quarter 2008)

