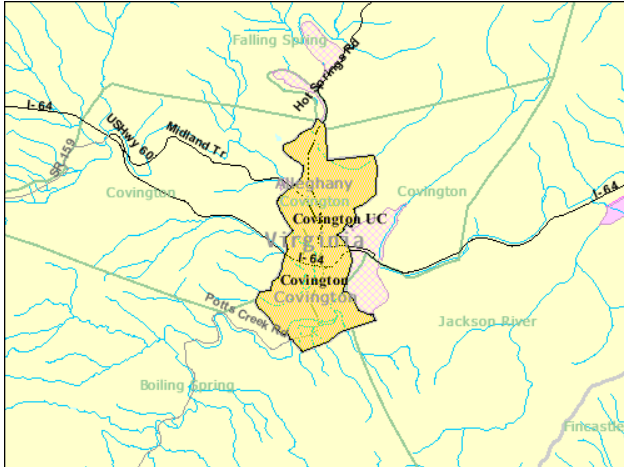


A Quick Look at...

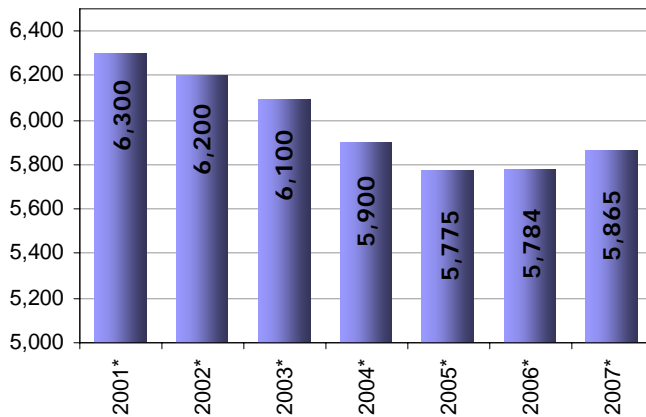
City of Covington, Virginia



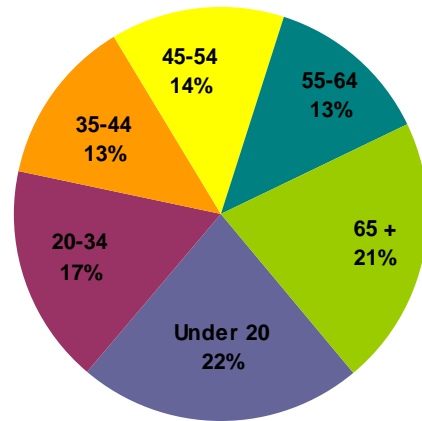
U.S. Census Bureau

Location: 37.77796 N, 79.99027 W
 Size: 4.39 sq. miles
 Population: 5,865
 Population Density: 1336 people/sq. mile

Population



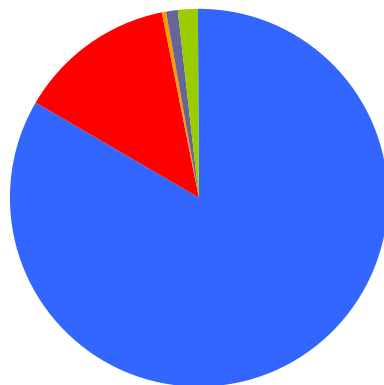
Population by Age



As of 2007

Median Age: 42.2

Population By Race



As of 2007

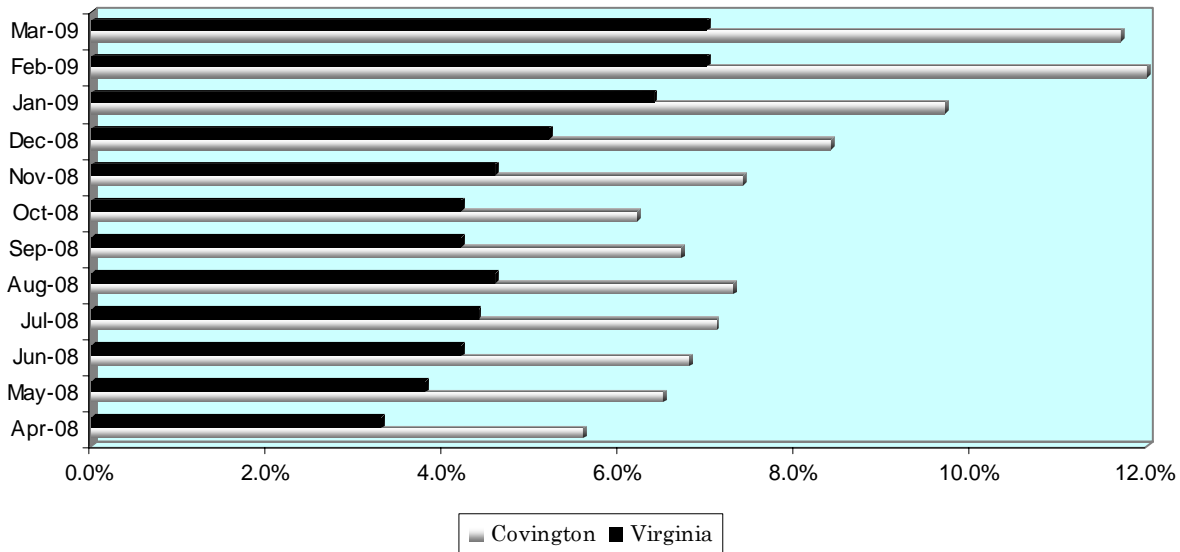
A Quick Look at...

City of Covington, Virginia

Housing Statistics*			
Value (owner occupied)		Gross Rent (renter occupied)	
1,727 units		855 units	
Less than \$50,000	45.4%	Less than \$200	1.6%
\$50,000 to \$99,999	45.2%	\$200 to \$299	13.2%
\$100,000 to \$149,999	6.6%	\$300 to \$499	50.9%
\$150,000 to \$199,999	2.1%	\$500 to \$749	18.8%
\$200,000 to \$299,999	0.3%	\$750 to \$999	1.6%
\$300,000 to \$499,999	0.0%	\$1,000 to \$1,499	0.0%
\$500,000 to \$999,999	0.3%	\$1,500 or more	0.8%
\$1,000,000 or more	0.0%	No cash rent	13.0%
Median Value: \$52,500		Median Rent: \$404	

* As of 2000 Census

UNEMPLOYMENT RATE: April '08 – March '09



Educational Attainment * (percentage of population 25 and older who have earned)

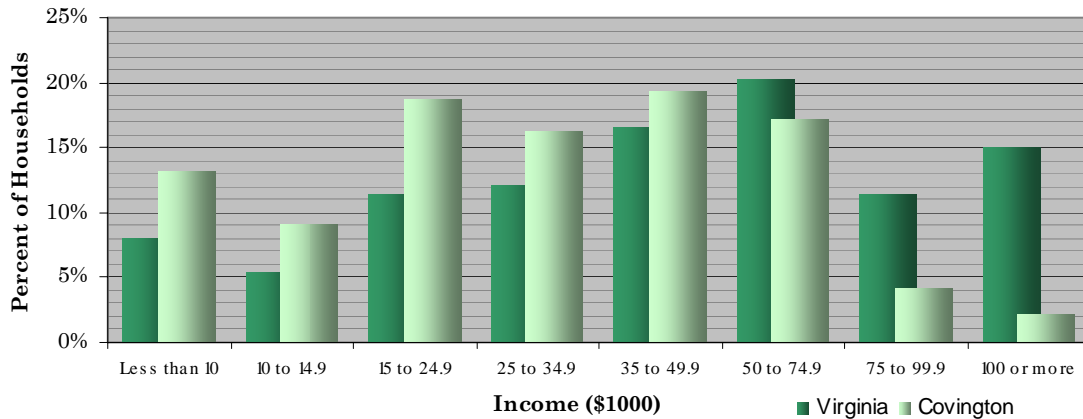
No Diploma	High School Diploma (or GED)	Some College (no degree)	Associate's Degree	Bachelor's Degree (or higher)
28.6%	39.8%	21.2%	4%	6.4%

* As of 2000 Census

A Quick Look at...

City of Covington, Virginia

Household Income (2000 Census)



Median Income (2007): \$59,575 Virginia \$34,907 City of Covington

Employment by Sector (3 rd Quarter 2008)		Employment by Occupation (2000 Census)	
Natural Resources and Mining	0.2%	Management and professional	23.3%
Construction	5.6%	Service	14.7%
Manufacturing	34.7%	Sales and office	22.0%
Trade, Transportation and Utilities	20.8%	Farming, fishing, and forestry	2.9%
Information	2.1%	Construction	14.2%
Financial Activities	3.8%	Production, transportation, and material moving	22.9%
Professional and Business Services	4.9%		
Education and Health Services	12.0%		
Leisure and Hospitality	8.6%		
Other Services	3.8%		
Public Administration	3.6%		
* Information unavailable		Total employment: 3,964	

Average Weekly Wage By Sector
(3rd Quarter 2008)

