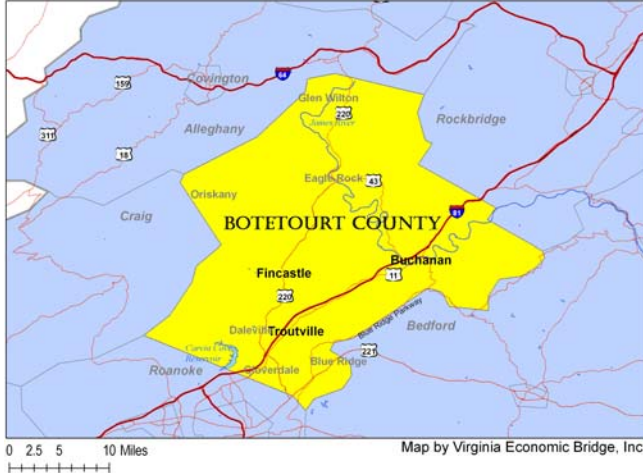


# A Quick Look at...

## Botetourt County, Virginia



Location: 37.55171 N, 79.80451 W

Size: 549 sq. miles

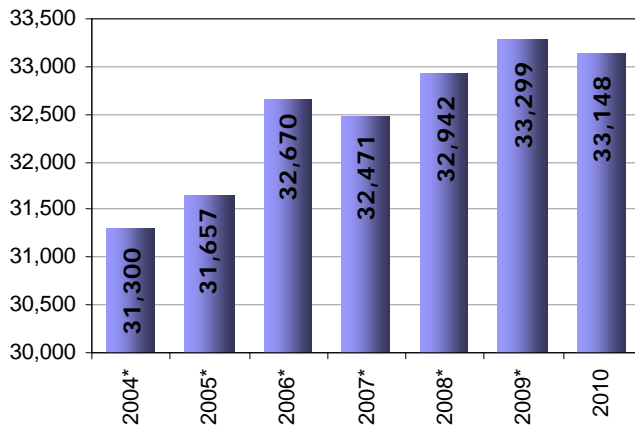
Population: 33,148

Population Density: 60.4 people/sq. mile

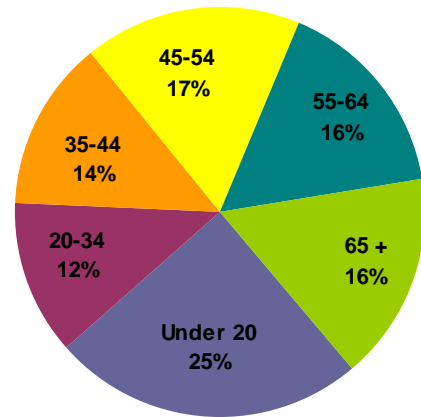
### Towns & Communities:

Blue Ridge, Buchanan, Cloverdale, Daleville, Eagle Rock, Fincastle, Glen Wilton, Oriskany, Troutville

### Population

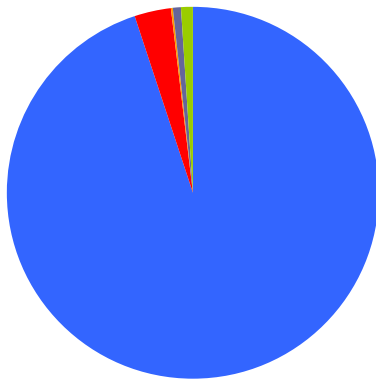


### Population by Age



As of 2010

Median Age: 44.9



### Population By Race

- 94.9% White
- 3.0% Black/African American
- 0.3% American Indian/Alaska Native
- 0.5% Asian
- 0.0% Native Pacific Islander
- 1.2% Some other race

As of 2010

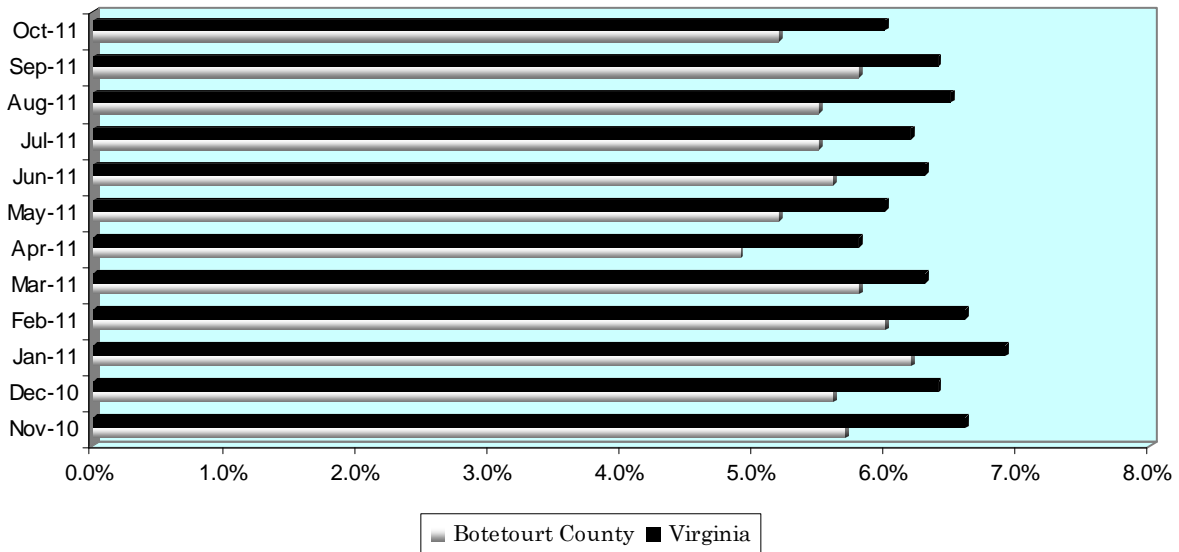
# A Quick Look at...

## Botetourt County, Virginia

Housing Statistics*			
Value (owner occupied)		Gross Rent (renter occupied)	
11,015 units		1,657 units	
Less than \$50,000	4.4%	Less than \$200	0.0%
\$50,000 to \$99,999	12.9%	\$200 to \$299	8.0%
\$100,000 to \$149,999	17.5%	\$300 to \$499	7.0%
\$150,000 to \$199,999	20.1%	\$500 to \$749	38.7%
\$200,000 to \$299,999	21.5%	\$750 to \$999	14.7%
\$300,000 to \$499,999	18.6%	\$1,000 to \$1,499	12.3%
\$500,000 to \$999,999	4.2%	\$1,500 or more	3.2%
\$1,000,000 or more	1.0%	No cash rent	16.2%
Median Value: \$189,900		Median Rent: \$661	

\* As of 2005-2009 American Community Survey

### UNEMPLOYMENT RATE: November '10 – October '11



### Educational Attainment \*

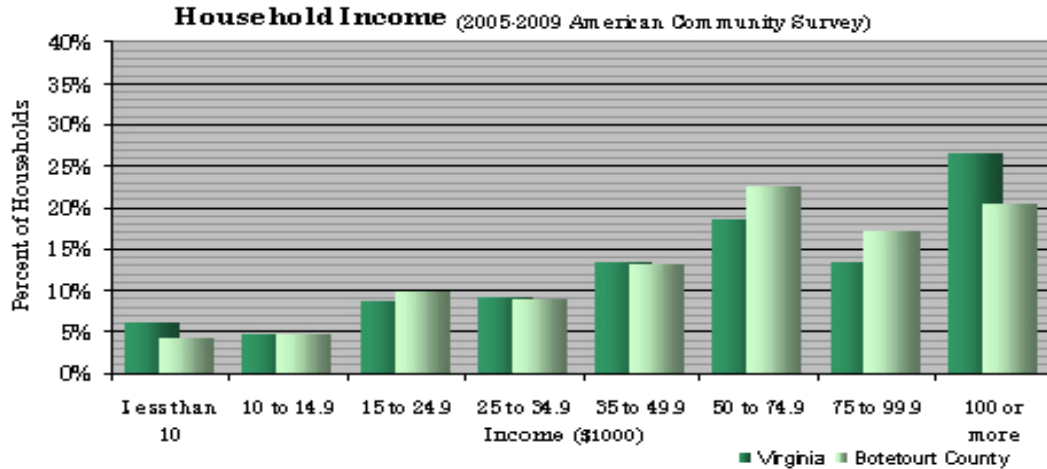
(percentage of population 25 and older who have earned)

No Diploma	High School Diploma (or GED)	Some College (no degree)	Associate's Degree	Bachelor's Degree (or higher)
13.1%	35.6%	19.8%	8.8%	22.7%

\* As of 2005-2009 American Community Survey

# A Quick Look at...

## Botetourt County, Virginia



Median Income: \$60,316 Virginia \$59,823 Botetourt County

Employment by Sector (1 <sup>st</sup> Quarter 2011)		Employment by Occupation (05-09 American Community Survey)	
Natural Resources and Mining	2.0%	Management and professional	32.5%
Construction	8.1%	Service	12.0%
Manufacturing	19.4%	Sales and office	28.2%
Trade, Transportation and Utilities	26.7%	Farming, fishing, and forestry	0.8%
Information	1.1%	Construction	10.8%
Financial Activities	1.9%	Production, transportation, and material moving	15.8%
Professional and Business Services	7.3%		
Education and Health Services	19.3%		
Leisure and Hospitality	9.0%		
Other Services	2.0%		
Public Administration	3.2%		
* Information unavailable		Total employment: 8,866	

