

A Quick Look at...

Alleghany County, Virginia



Location: 37.78446 N, 80.01342 W

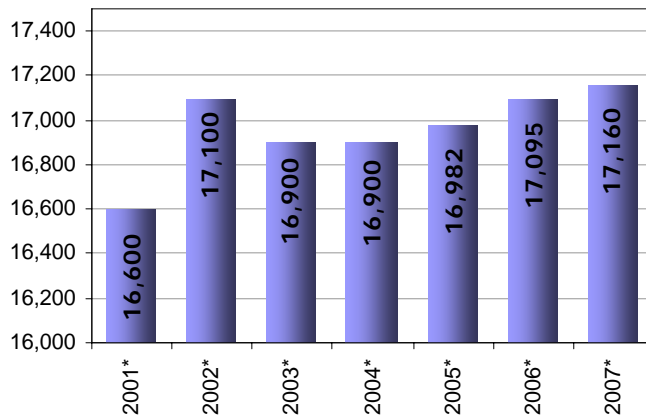
Size: 447.17 sq. miles

Population: 17,160

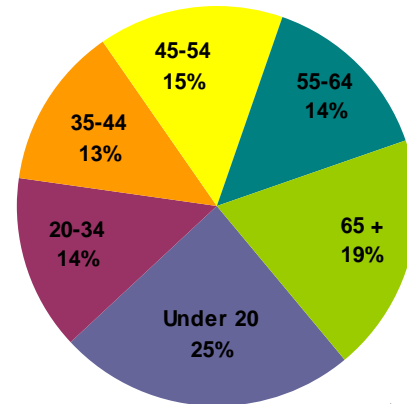
Population Density: 38.4 people/sq. mile

Towns & Communities:
Clifton Forge, Iron Gate, Low Moor, Selma

Population

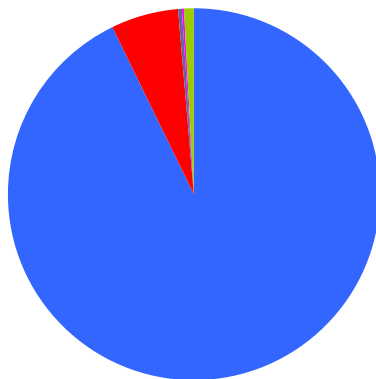


Population by Age



As of 2007

Median Age: 43.0



Population By Race

- 92.6% White
- 5.8% Black/African American
- 0.2% American Indian/Alaska Native
- 0.3% Asian
- 0.0% Native Pacific Islander
- 1.0% Some other race

As of 2007

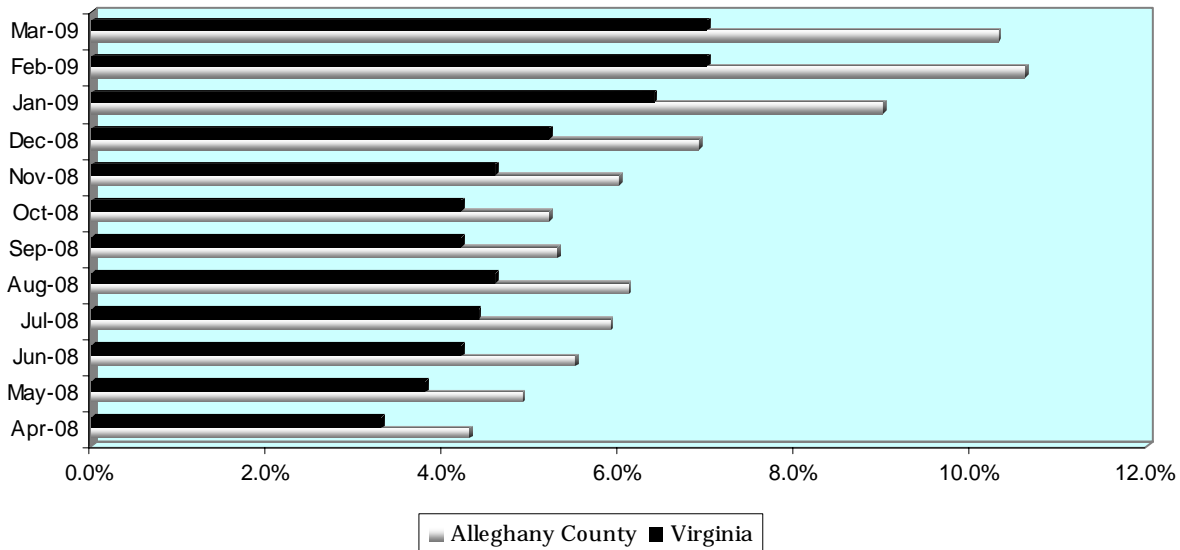
A Quick Look at...

Allegheny County, Virginia

Housing Statistics*			
Value (owner occupied)		Gross Rent (renter occupied)	
3,241 units		739 units	
Less than \$50,000	21.8%	Less than \$200	17.2%
\$50,000 to \$99,999	49.4%	\$200 to \$299	16.2%
\$100,000 to \$149,999	21.1%	\$300 to \$499	32.3%
\$150,000 to \$199,999	5.4%	\$500 to \$749	12.6%
\$200,000 to \$299,999	2.0%	\$750 to \$999	2.3%
\$300,000 to \$499,999	0.0%	\$1,000 to \$1,499	0.0%
\$500,000 to \$999,999	0.3%	\$1,500 or more	0.0%
\$1,000,000 or more	0.0%	No cash rent	19.4%
Median Value: \$77,500		Median Rent: \$360	

* As of 2000 Census

UNEMPLOYMENT RATE: April '08 -- March '09



Educational Attainment * (percentage of population 25 and older who have earned)

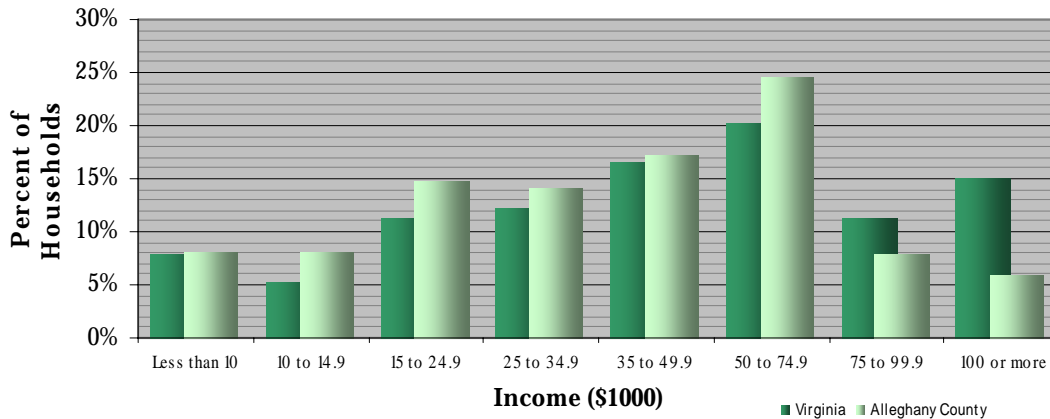
No Diploma	High School Diploma (or GED)	Some College (no degree)	Associate's Degree	Bachelor's Degree (or higher)
22.4%	39.2%	18.5%	6.3%	13.6%

* As of 2000 Census

A Quick Look at...

Alleghany County, Virginia

Household Income (2000 Census)



Median Income (2007): \$59,575 Virginia \$41,530 Alleghany County

Employment by Sector (3 rd Quarter 2008)		Employment by Occupation (2000 Census)	
Natural Resources and Mining	0.5%	Management and professional	23.3%
Construction	5.2%	Service	14.7%
Manufacturing	14.6%	Sales and office	22.0%
Trade, Transportation and Utilities	16.3%	Farming, fishing, and forestry	2.9%
Information	0.1%	Construction	14.2%
Financial Activities	1.3%	Production, transportation, and material moving	22.9%
Professional and Business Services	2.7%		
Education and Health Services	40.7%		
Leisure and Hospitality	9.2%		
Other Services	2.9%		
Public Administration	6.4%		
* Information unavailable		Total employment: 4,263	

Average Weekly Wage By Sector
(3rd Quarter 2008)

