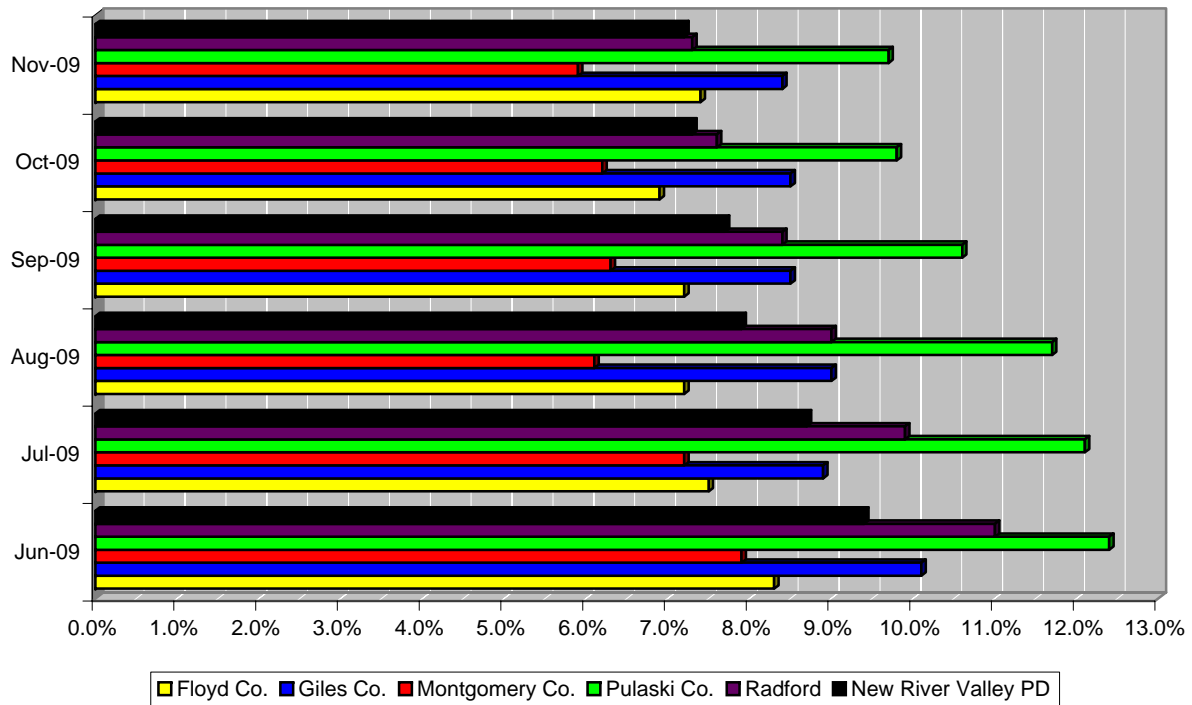


PD/County	Jun-09	Jul-09	Aug-09	Sep-09	Oct-09	Nov-09
Floyd Co.	8.3%	7.5%	7.2%	7.2%	6.9%	7.4%
Giles Co.	10.1%	8.9%	9.0%	8.5%	8.5%	8.4%
Montgomery Co.	7.9%	7.2%	6.1%	6.3%	6.2%	5.9%
Pulaski Co.	12.4%	12.1%	11.7%	10.6%	9.8%	9.7%
Radford	11.0%	9.9%	9.0%	8.4%	7.6%	7.3%
New River Valley PD	9.4%	8.7%	7.9%	7.7%	7.3%	7.2%

**NEW RIVER PD: UNEMPLOYMENT RATES BY COUNTY/CITY**



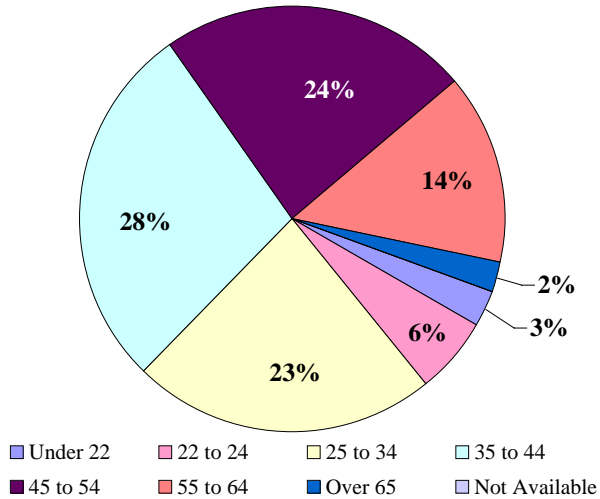
## Characteristics of the Insured Unemployed

New River Valley PD, November 2009

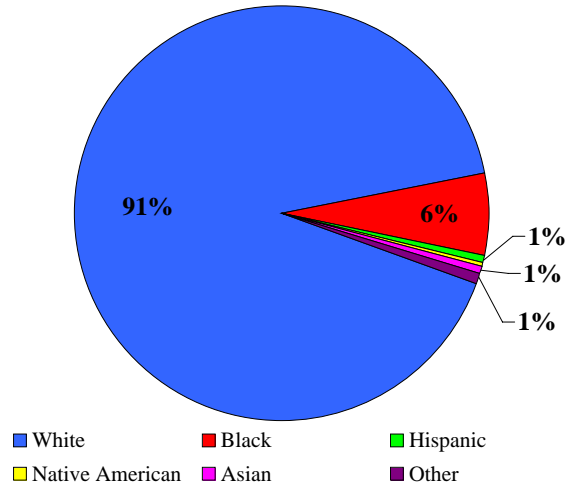
Civilian Workforce: 89,491    Unemployed: 7.2%

Unemployment by Gender: Male: 66%    Female: 34%

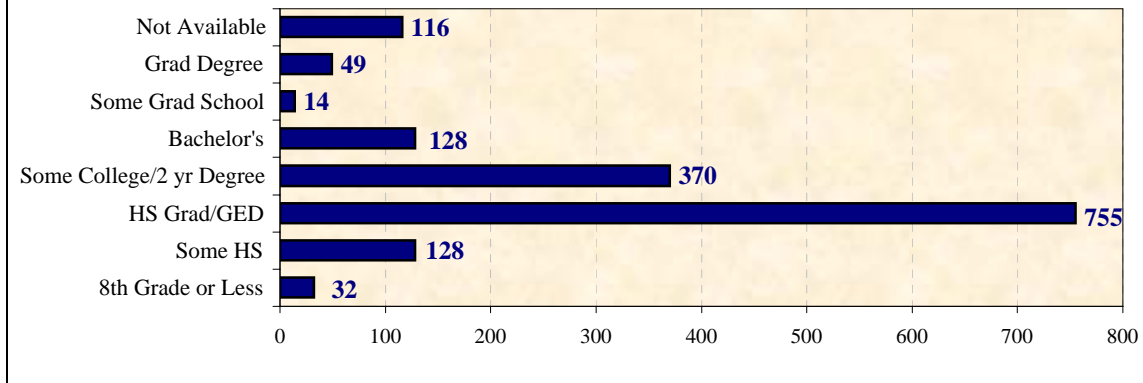
### Unemployment by Age



### Unemployment by Race



### Unemployment by Educational Attainment



Source: Virginia Employment Commission

Compiled by: Virginia Economic Bridge, January 2010