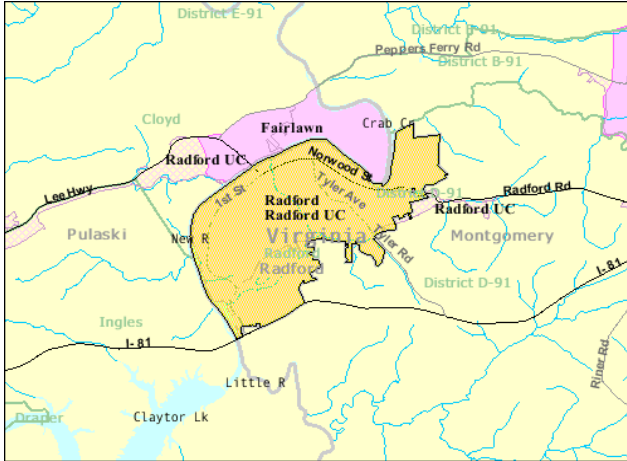


# A Quick Look at...

## City of Radford, Virginia



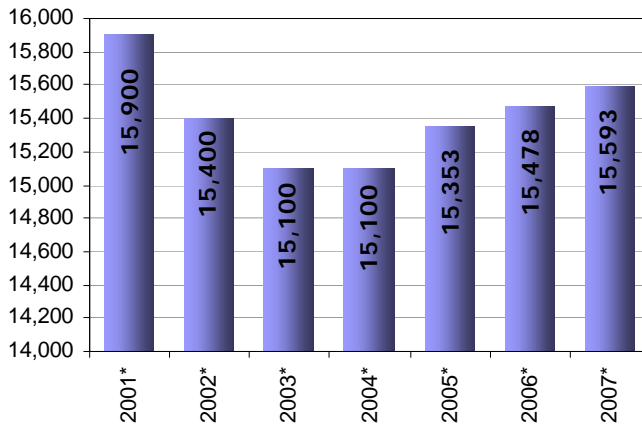
Location: 37.135816 N, 80.571721 W

Size: 9.63 sq. miles

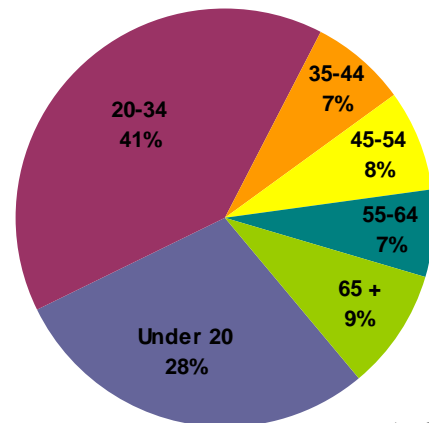
Population: 15,593

Population Density: 1,619.2 people/sq. mile

### Population

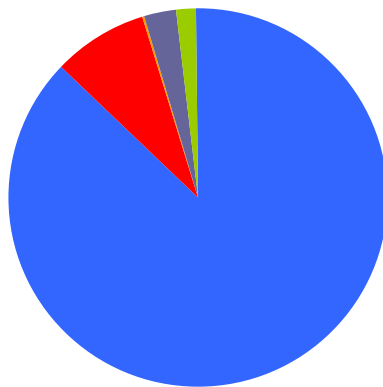


### Population by Age



As of 2007

Median Age: 22.7



### Population By Race

- 87.2% White
- 8.2% Black/African American
- 0.2% American Indian/Alaska Native
- 2.8% Asian
- 0.0% Native Pacific Islander
- 1.5% Some other race

As of 2007

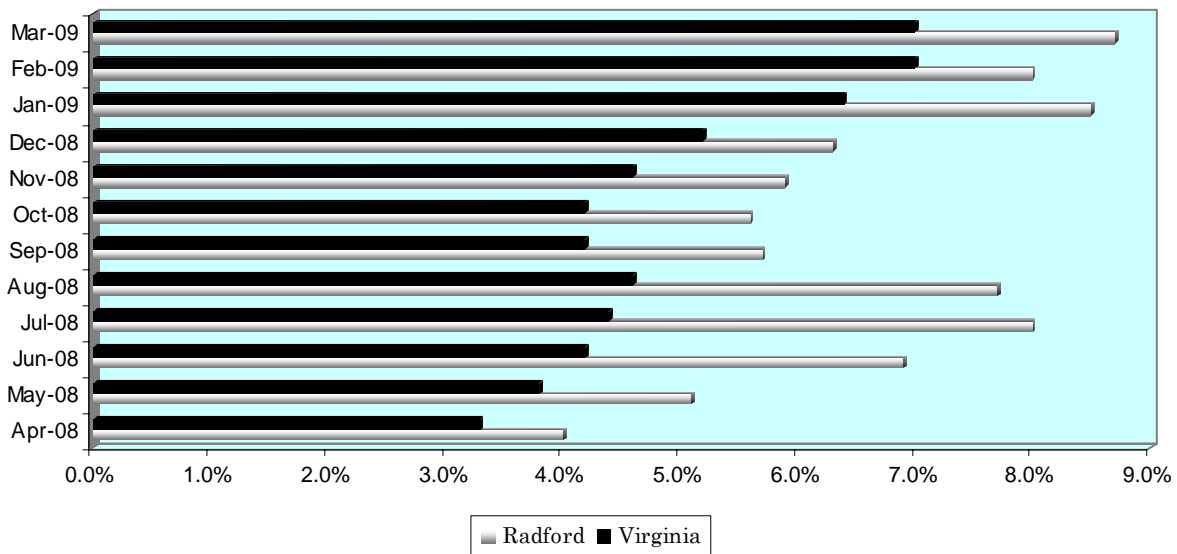
# A Quick Look at...

## City of Radford, Virginia

Housing Statistics*			
Value (owner occupied)		Gross Rent (renter occupied)	
2,333 units		3,224 units	
Less than \$50,000	4.7%	Less than \$200	5.0%
\$50,000 to \$99,999	50.4%	\$200 to \$299	15.1%
\$100,000 to \$149,999	25.7%	\$300 to \$499	38.8%
\$150,000 to \$199,999	10.8%	\$500 to \$749	29.9%
\$200,000 to \$299,999	7.2%	\$750 to \$999	5.6%
\$300,000 to \$499,999	1.2%	\$1,000 to \$1,499	1.9%
\$500,000 to \$999,999	0.0%	\$1,500 or more	0.0%
\$1,000,000 or more	0.0%	No cash rent	3.7%
Median Value: \$95,100		Median Rent: \$437	

\* As of 2000 Census

### UNEMPLOYMENT RATE: April '08 – March '09



### Educational Attainment \*

(percentage of population 25 and older who have earned)

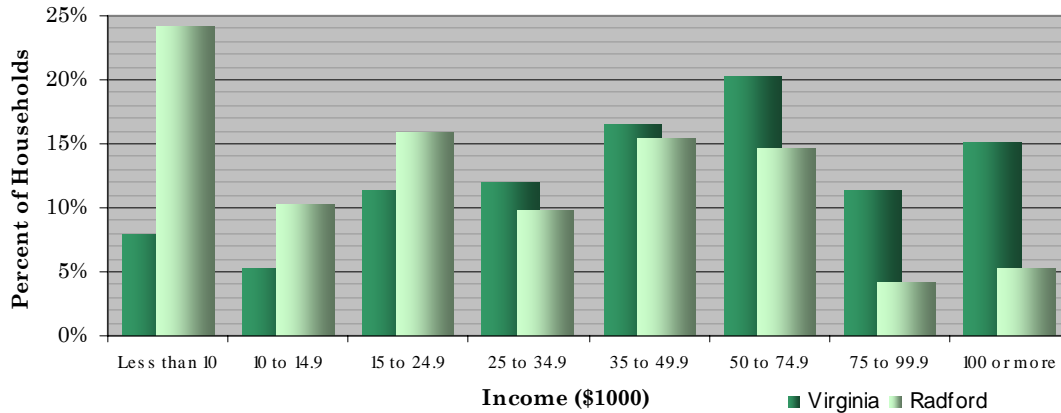
No Diploma	High School Diploma (or GED)	Some College (no degree)	Associate's Degree	Bachelor's Degree (or higher)
16.7%	19.6%	22.6%	7.1%	34%

\* As of 2000 Census

# A Quick Look at...

## City of Radford, Virginia

### Household Income (2000 Census)



Median Income (2007): \$59,575 Virginia \$33,012 Radford City

Employment by Sector (3 <sup>rd</sup> Quarter 2008)		Employment by Occupation (2000 Census)	
Natural Resources and Mining	0.1%	Management and professional	35.5%
Construction	2.7%	Service	20.3%
Manufacturing	22.2%	Sales and office	26.0%
Trade, Transportation and Utilities	12.8%	Farming, fishing, and forestry	0.1%
Information	0.6%	Construction	5.5%
Financial Activities	4.7%	Production, transportation, and material moving	12.6%
Professional and Business Services	4.6%		
Education and Health Services	36.6%		
Leisure and Hospitality	9.3%		
Other Services	2.0%		
Public Administration	4.5%		
* Information unavailable		Total employment: 6,191	

### Average Weekly Wage By Sector

(3rd Quarter 2008)

