

A Quick Look at...

Pulaski County, Virginia



Location: 37.06318 N, 80.71385 W

Size: 327 sq. miles

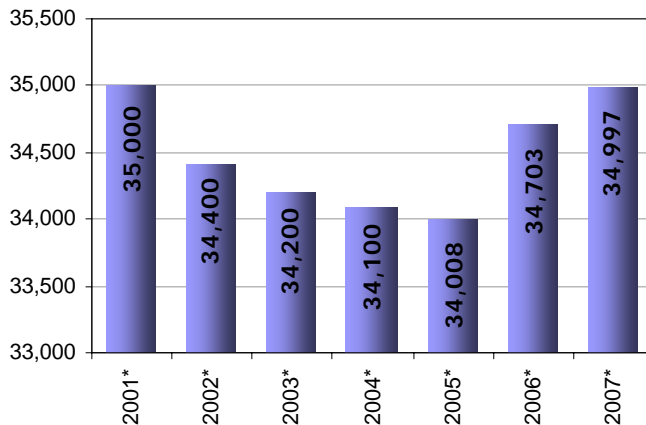
Population: 34,997

Population Density: 107 people/sq. mile

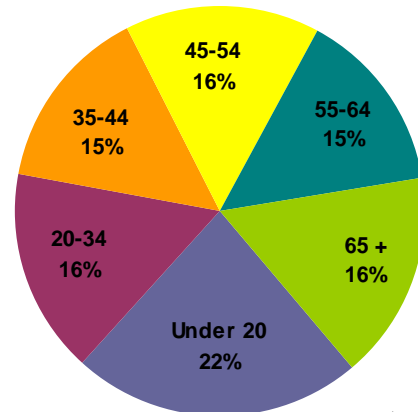
Towns & Communities:

Allisonia, Belspring, Claytor Lake, Draper, Dublin, Fairlawn, Hiwassee, Lillydell, Mountain View, New River, Newbern, Parrott, Pulaski, Snowville

Population

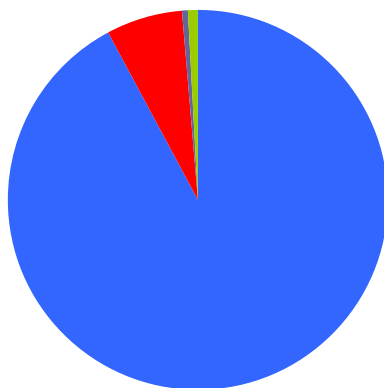


Population by Age



As of 2007

Median Age: 41.7



Population By Race

- 92.2% White
- 6.2% Black/African American
- 0.2% American Indian/Alaska Native
- 0.4% Asian
- 0.0% Native Pacific Islander
- 0.9% Some other race

As of 2007

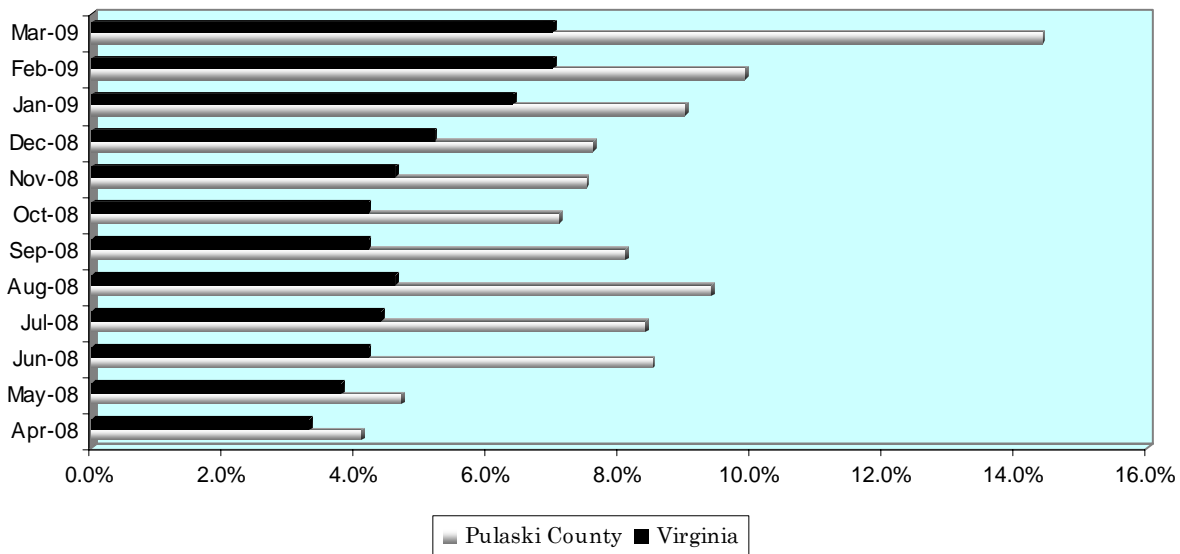
A Quick Look at...

Pulaski County, Virginia

Housing Statistics*			
Value (owner occupied)		Gross Rent (renter occupied)	
8,635 units		3,789 units	
Less than \$50,000	19.1%	Less than \$200	9.1%
\$50,000 to \$99,999	50.1%	\$200 to \$299	13.7%
\$100,000 to \$149,999	19.1%	\$300 to \$499	46.8%
\$150,000 to \$199,999	7.5%	\$500 to \$749	16.9%
\$200,000 to \$299,999	3.0%	\$750 to \$999	2.5%
\$300,000 to \$499,999	1.1%	\$1,000 to \$1,499	0.3%
\$500,000 to \$999,999	0.1%	\$1,500 or more	0.0%
\$1,000,000 or more	0.1%	No cash rent	10.8%
Median Value: \$80,000		Median Rent: \$382	

* As of 2000 Census

UNEMPLOYMENT RATE: April '08 – March '09



Educational Attainment * (percentage of population 25 and older who have earned)

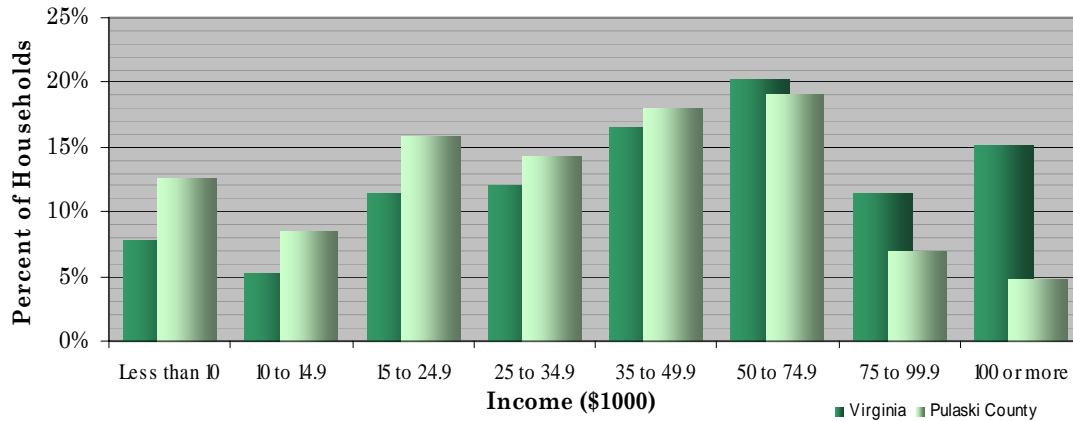
No Diploma	High School Diploma (or GED)	Some College (no degree)	Associate's Degree	Bachelor's Degree (or higher)
25.8%	33.9%	20%	7.9%	12.5%

* As of 2000 Census

A Quick Look at...

Pulaski County, Virginia

Household Income (2000 Census)



Median Income (2007): \$59,575 Virginia \$40,427 Pulaski County

Employment by Sector (3 rd Quarter 2008)		Employment by Occupation (2000 Census)	
Natural Resources and Mining	0.6%	Management and professional	24.0%
Construction	3.6%	Service	14.1%
Manufacturing	32.1%	Sales and office	22.7%
Trade, Transportation and Utilities	19.3%	Farming, fishing, and forestry	1.0%
Information	1.1%	Construction	10.7%
Financial Activities	1.6%	Production, transportation, and material moving	27.4%
Professional and Business Services	5.8%		
Education and Health Services	18.4%		
Leisure and Hospitality	10.5%		
Other Services	2.5%		
Public Administration	4.5%		
* Information unavailable		Total employment: 13,952	

Average Weekly Wage By Sector

(3rd Quarter 2008)

