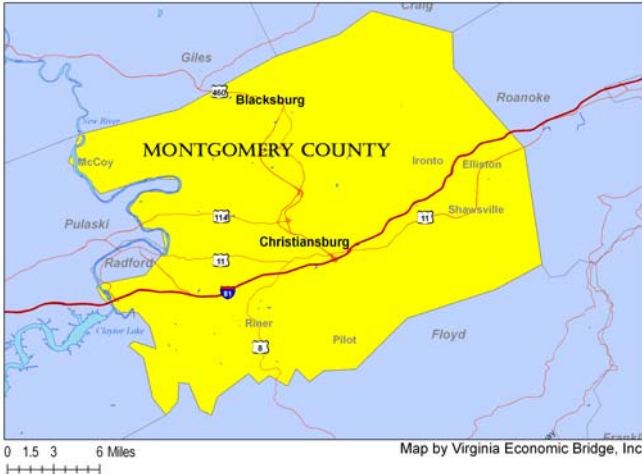


A Quick Look at...

Montgomery County, Virginia



Location: 37.17117 N, 80.39441 W

Size: 395 sq. miles

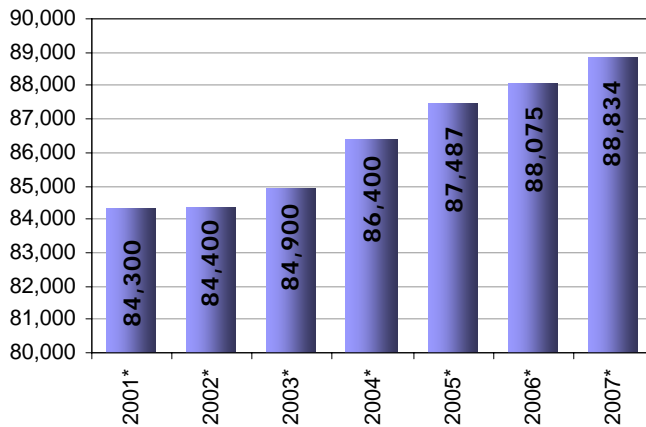
Population: 88,834

Population Density: 224.9 people/sq. mile

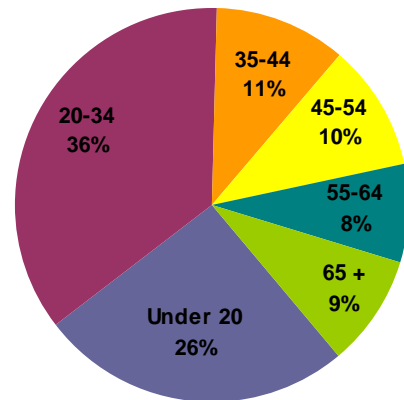
Towns & Communities:

Blacksburg, Christiansburg, Elliston, Ironto, McCoy, Pilot, Riner, Shawsville

Population

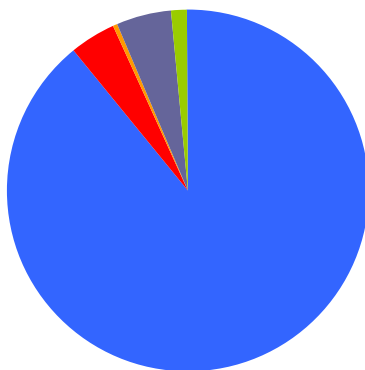


Population by Age



As of 2007

Median Age: 25.7



Population By Race

- 89.2% White
- 4.2% Black/African American
- 0.2% American Indian/Alaska Native
- 4.8% Asian
- 0.0% Native Pacific Islander
- 1.5% Some other race

As of 2007

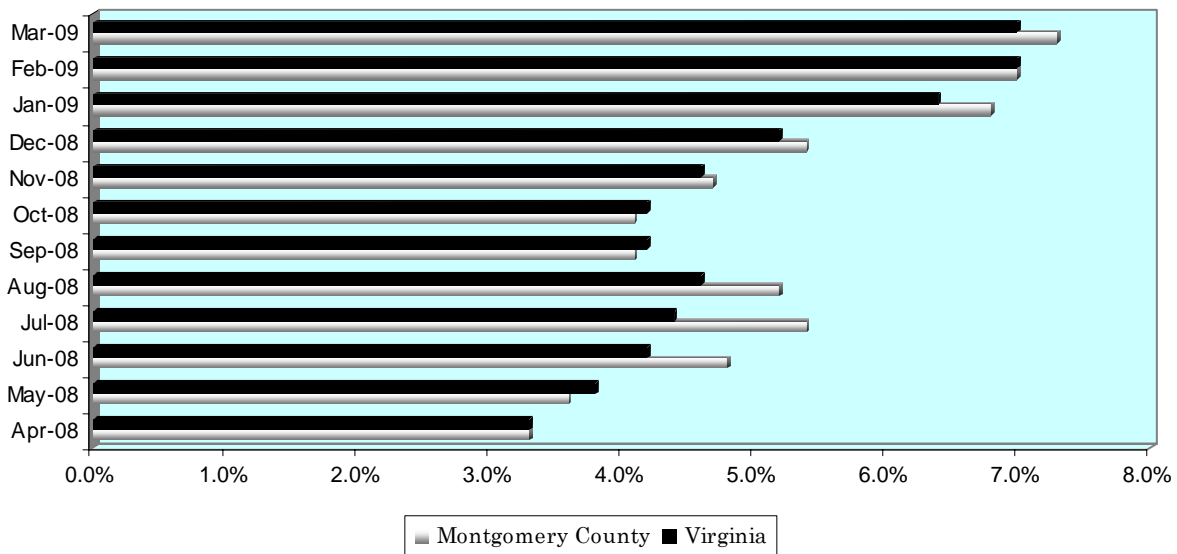
A Quick Look at...

Montgomery County, Virginia

Housing Statistics*			
Value (owner occupied)		Gross Rent (renter occupied)	
12,639 units		13,762 units	
Less than \$50,000	5.5%	Less than \$200	3.6%
\$50,000 to \$99,999	34.8%	\$200 to \$299	5.5%
\$100,000 to \$149,999	31.5%	\$300 to \$499	31.8%
\$150,000 to \$199,999	12.6%	\$500 to \$749	37.8%
\$200,000 to \$299,999	12.2%	\$750 to \$999	11.4%
\$300,000 to \$499,999	3.2%	\$1,000 to \$1,499	5.6%
\$500,000 to \$999,999	0.2%	\$1,500 or more	0.6%
\$1,000,000 or more	0.0%	No cash rent	3.7%
Median Value: \$114,600		Median Rent: \$535	

* As of 2000 Census

UNEMPLOYMENT RATE: April '08 – March '09



Educational Attainment *

(percentage of population 25 and older who have earned)

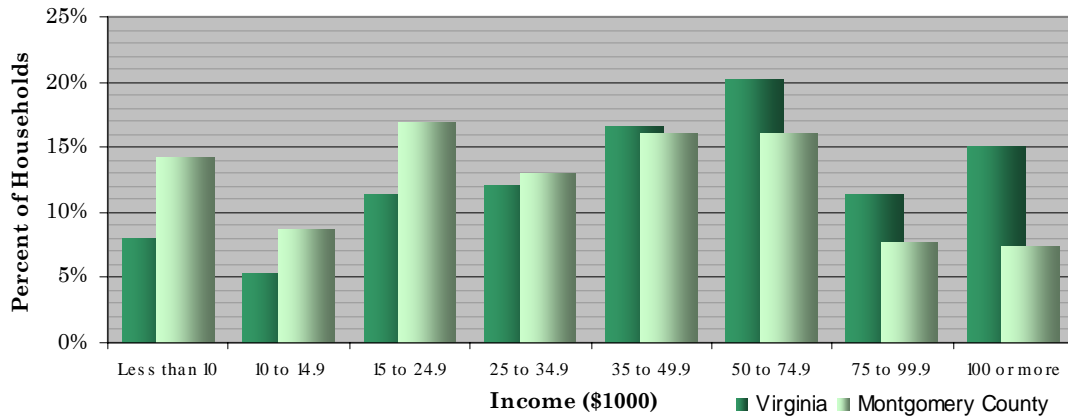
No Diploma	High School Diploma (or GED)	Some College (no degree)	Associate's Degree	Bachelor's Degree (or higher)
17.2%	23.7%	17.5%	5.7%	35.9%

* As of 2000 Census

A Quick Look at...

Montgomery County, Virginia

Household Income (2000 Census)



Median Income (2007): \$59,575 Virginia \$42,029 Montgomery County

Employment by Sector (3 rd Quarter 2008)		Employment by Occupation (2000 Census)	
Natural Resources and Mining	0.4%	Management and professional	40.2%
Construction	4.9%	Service	16.4%
Manufacturing	13.1%	Sales and office	22.2%
Trade, Transportation and Utilities	15.3%	Farming, fishing, and forestry	0.4%
Information	1.1%	Construction	8.2%
Financial Activities	3.0%	Production, transportation, and material moving	12.7%
Professional and Business Services	10.9%		
Education and Health Services	34.9%		
Leisure and Hospitality	11.8%		
Other Services	2.5%		
Public Administration	2.2%		
* Information unavailable		Total employment: 40,084	

Average Weekly Wage By Sector

(3rd Quarter 2008)

