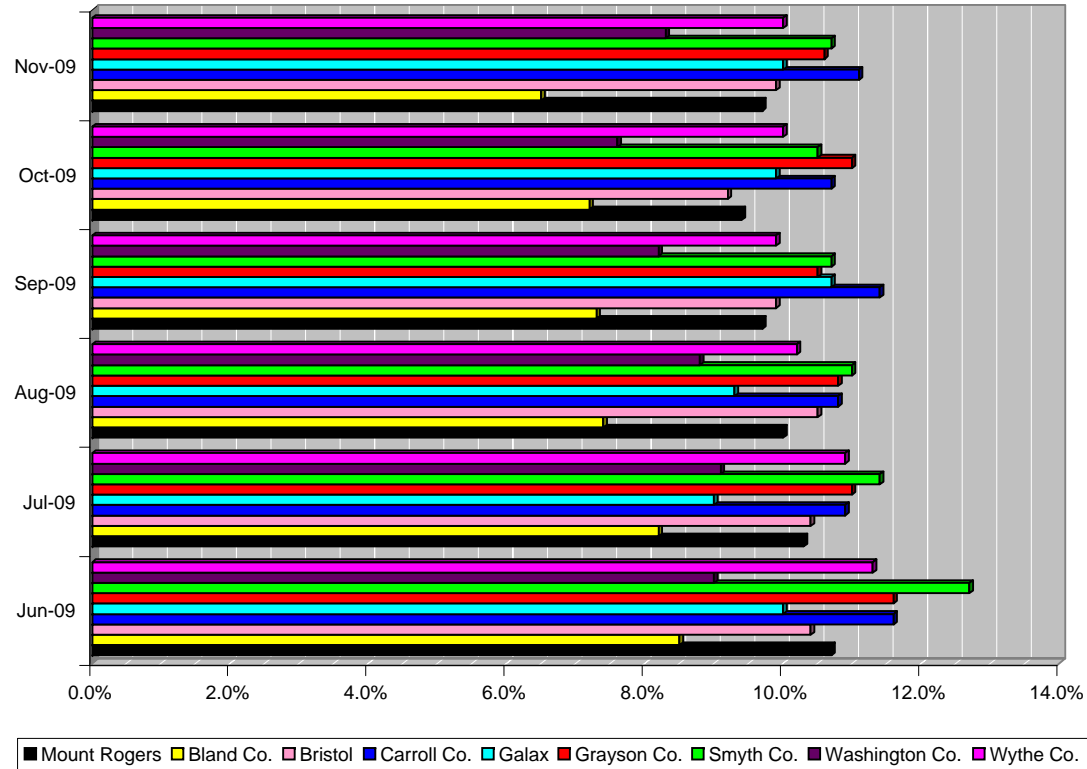


| PD/County | Jun-09 | Jul-09 | Aug-09 | Sep-09 | Oct-09 | Nov-09 |
|----------------|--------|--------|--------|--------|--------|--------|
| Mount Rogers | 10.7% | 10.3% | 10.0% | 9.7% | 9.4% | 9.7% |
| Bland Co. | 8.5% | 8.2% | 7.4% | 7.3% | 7.2% | 6.5% |
| Bristol | 10.4% | 10.4% | 10.5% | 9.9% | 9.2% | 9.9% |
| Carroll Co. | 11.6% | 10.9% | 10.8% | 11.4% | 10.7% | 11.1% |
| Galax | 10.0% | 9.0% | 9.3% | 10.7% | 9.9% | 10.0% |
| Grayson Co. | 11.6% | 11.0% | 10.8% | 10.5% | 11.0% | 10.6% |
| Smyth Co. | 12.7% | 11.4% | 11.0% | 10.7% | 10.5% | 10.7% |
| Washington Co. | 9.0% | 9.1% | 8.8% | 8.2% | 7.6% | 8.3% |
| Wythe Co. | 11.3% | 10.9% | 10.2% | 9.9% | 10.0% | 10.0% |

MOUNT ROGERS PD: UNEMPLOYMENT RATES BY COUNTY/CITY



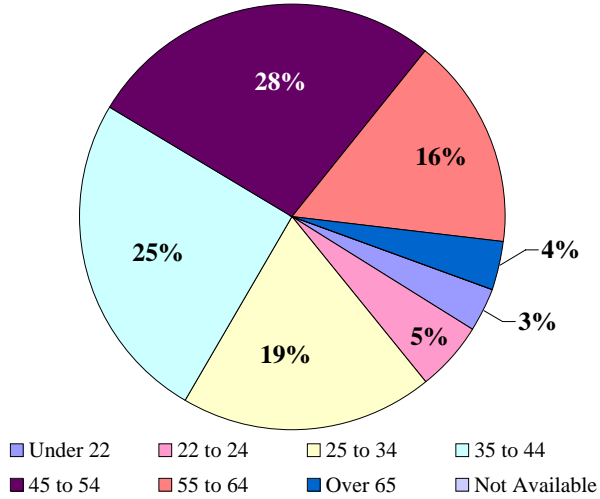
Characteristics of the Insured Unemployed

Mount Rogers PD, November 2009

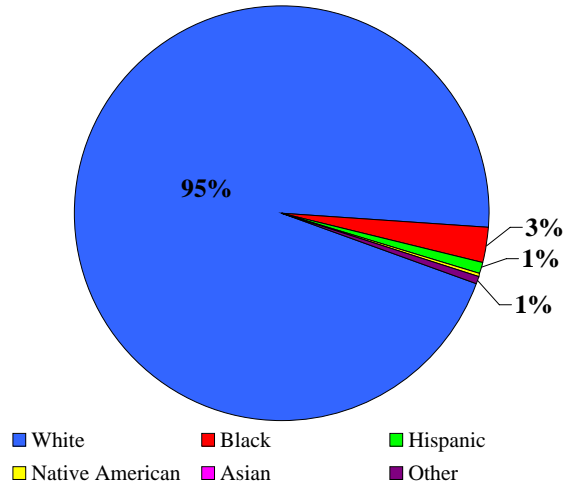
Civilian Workforce: 93,938 **Unemployed:** 9.7%

Unemployment by Gender: Male: 66% Female: 34%

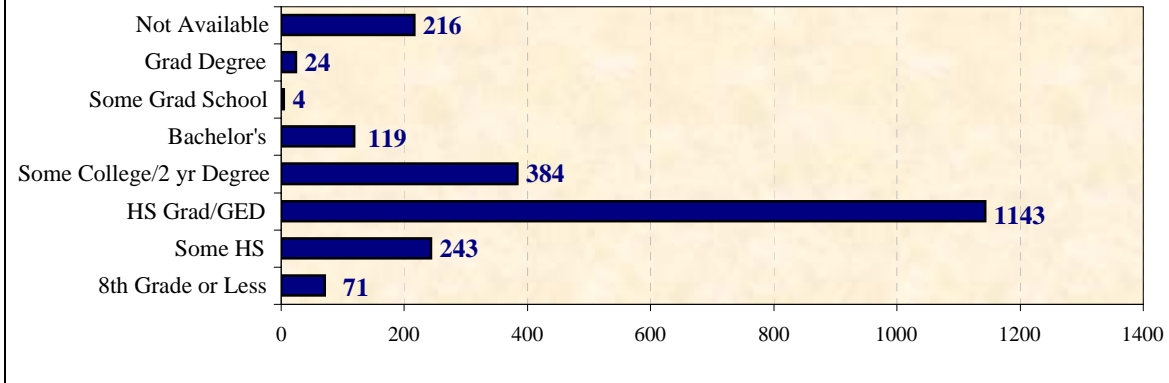
Unemployment by Age



Unemployment by Race



Unemployment by Educational Attainment



Source: Virginia Employment Commission

Compiled by: Virginia Economic Bridge, January 2010