

# A Quick Look at...

## Carroll County, Virginia



**Location:** 36.73471 N, 80.73432 W

**Size:** 494 sq. miles

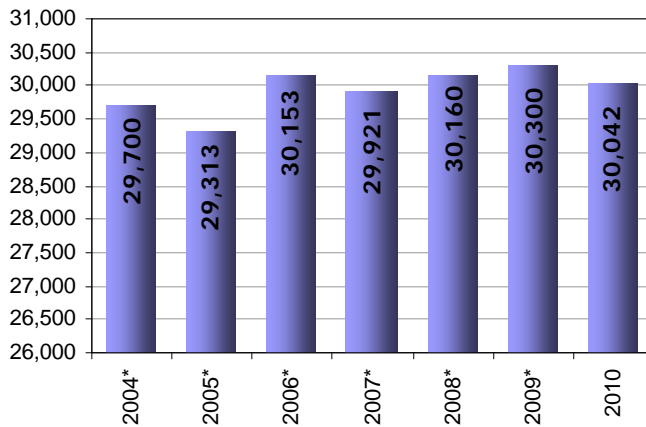
**Population:** 30,042

**Population Density:** 60.8 people/sq. mile

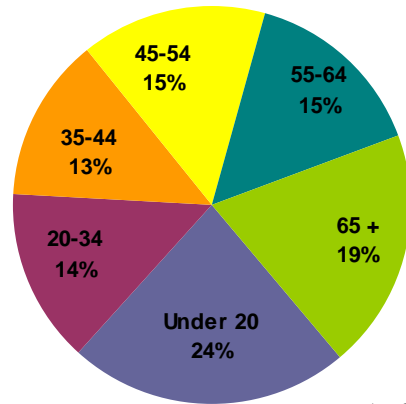
**Towns & Communities:**

Cana, Dugspur, Fancy Gap, Hillsville, Lamsburg, Laurel Fork, Pipers Gap, Sylvanus, Woodlawn

### Population

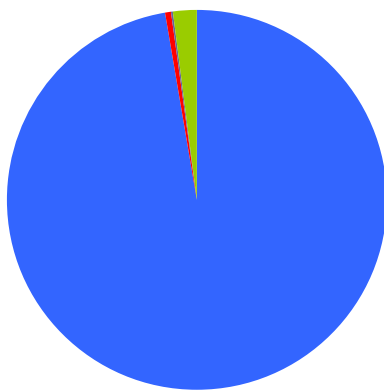


### Population by Age



As of 2010

Median Age: 44.7



### Population By Race

- 97.1% White
- 0.6% Black/African American
- 0.2% American Indian/Alaska Native
- 0.2% Asian
- 0.0% Native Pacific Islander
- 1.9% Some other race

As of 2010

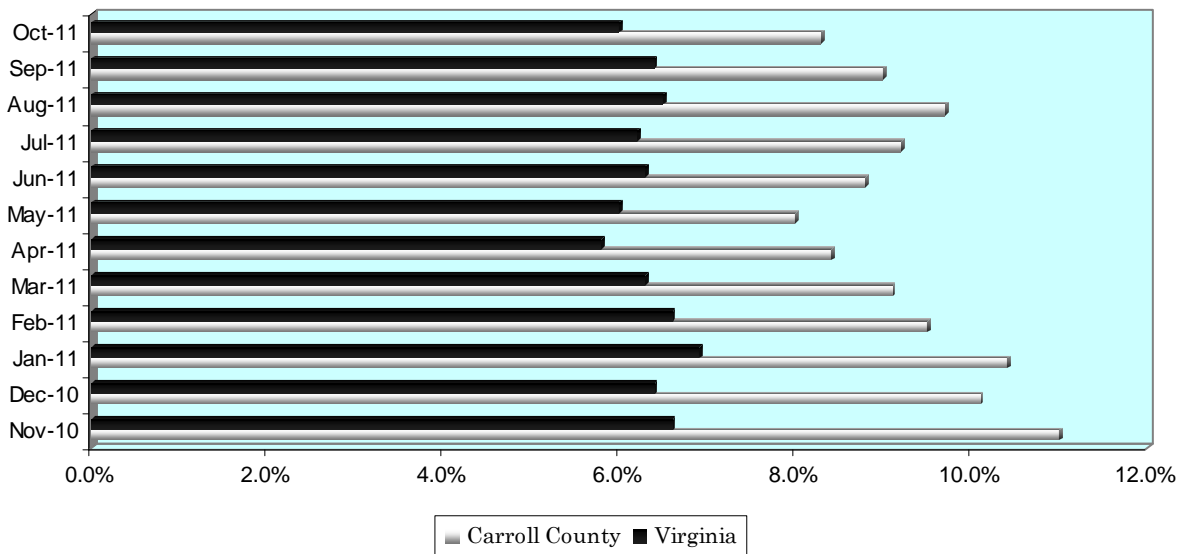
# A Quick Look at...

## Carroll County, Virginia

Housing Statistics*			
Value (owner occupied)		Gross Rent (renter occupied)	
9,585 units		2,971 units	
Less than \$50,000	22.0%	Less than \$200	2.7%
\$50,000 to \$99,999	33.2%	\$200 to \$299	4.0%
\$100,000 to \$149,999	20.4%	\$300 to \$499	31.7%
\$150,000 to \$199,999	9.7%	\$500 to \$749	20.6%
\$200,000 to \$299,999	8.6%	\$750 to \$999	8.3%
\$300,000 to \$499,999	5.1%	\$1,000 to \$1,499	2.7%
\$500,000 to \$999,999	0.8%	\$1,500 or more	1.0%
\$1,000,000 or more	0.1%	No cash rent	28.9%
Median Value: \$92,800		Median Rent: \$366	

\* As of 2005-2009 American Community Survey

### UNEMPLOYMENT RATE: November '10 – October '11



### Educational Attainment \*

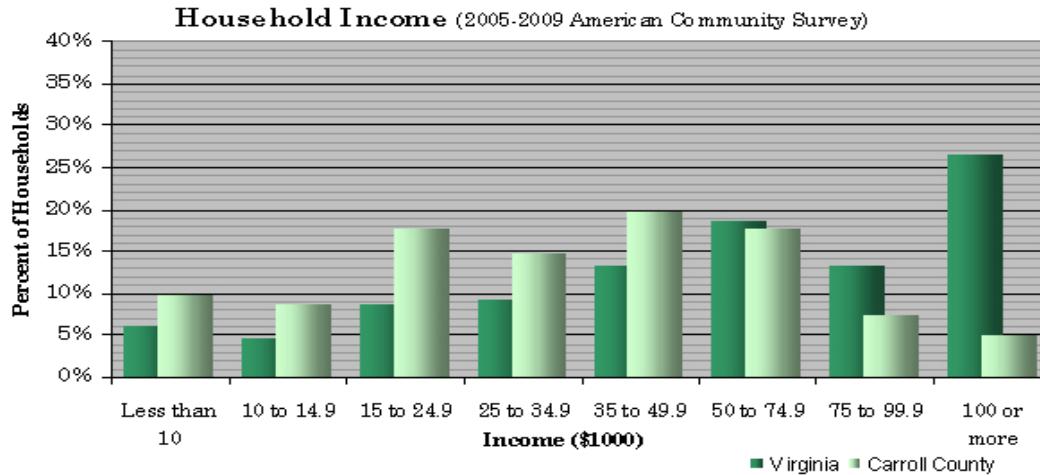
(percentage of population 25 and older who have earned)

No Diploma	High School Diploma (or GED)	Some College (no degree)	Associate's Degree	Bachelor's Degree (or higher)
28.7%	35.5%	15.1%	7.8%	13.0%

\* As of 2005-2009 American Community Survey

# A Quick Look at...

## Carroll County, Virginia



Median Income: \$60,316 Virginia \$34,794 Carroll County

Employment by Sector (1 <sup>st</sup> Quarter 2011)		Employment by Occupation (2005-2009 ACS)	
Natural Resources and Mining	0.4%	Management and professional	21.1%
Construction	9.0%	Service	15.9%
Manufacturing	16.6%	Sales and office	19.8%
Trade, Transportation and Utilities	17.5%	Farming, fishing, and forestry	0.8%
Information	0.5%	Construction	17.3%
Financial Activities	1.6%	Production, transportation, and material moving	25.1%
Professional and Business Services	2.9%		
Education and Health Services	34.5%		
Leisure and Hospitality	11.0%		
Other Services	1.6%		
Public Administration	4.4%		
* Information unavailable		Total employment: 5,948	

