

# A Quick Look at...

## City of Bristol, Virginia



U.S. Census Bureau

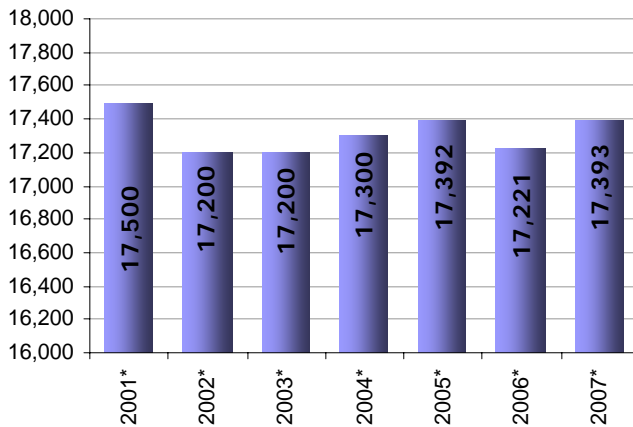
Location: 36.618093 N, 82.182297W

Size: 11.5 sq. miles

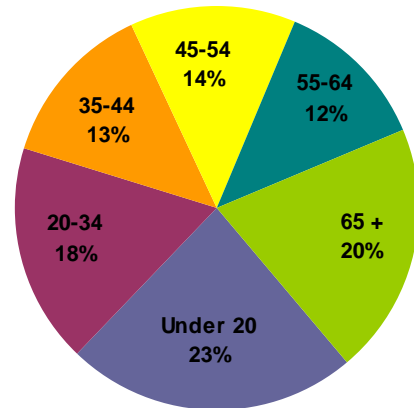
Population: 17,393

Population Density: 1,512.4 people/sq. mile

### Population

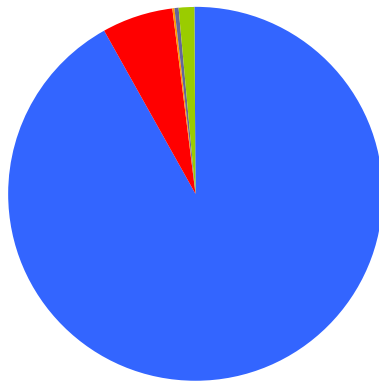


### Population by Age



As of 2007

Median Age: 41.0



### Population By Race

- 91.9% White
- 6.0% Black/African American
- 0.3% American Indian/Alaska Native
- 0.5% Asian
- 0.0% Native Pacific Islander
- 1.3% Some other race

As of 2007

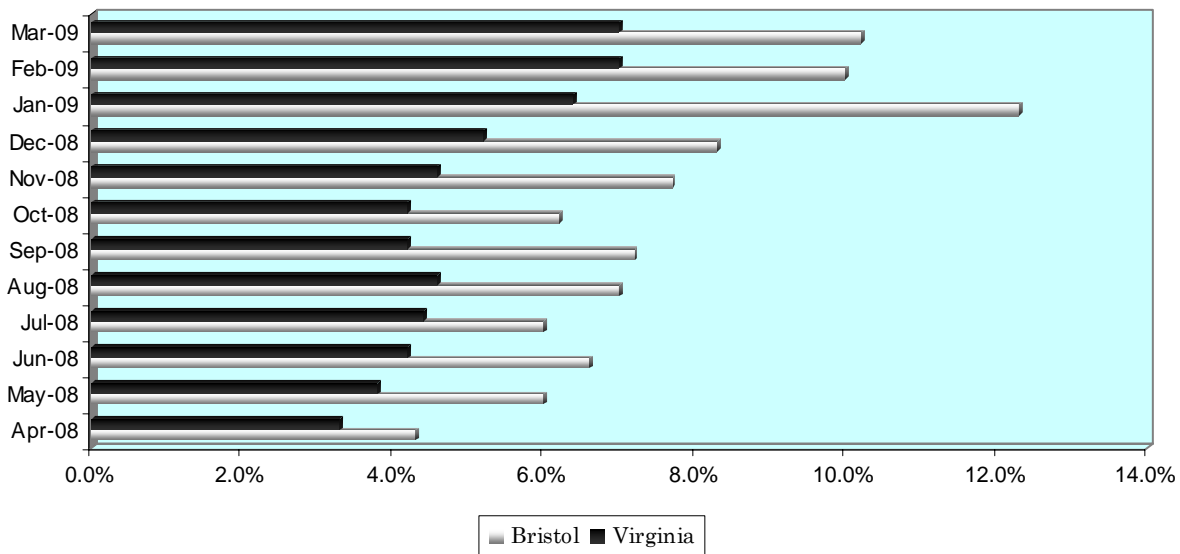
# A Quick Look at...

## City of Bristol, Virginia

Housing Statistics*			
Value (owner occupied)		Gross Rent (renter occupied)	
4,517 units		2,678 units	
Less than \$50,000	23.4%	Less than \$200	16.9%
\$50,000 to \$99,999	55.0%	\$200 to \$299	10.6%
\$100,000 to \$149,999	16.8%	\$300 to \$499	36.7%
\$150,000 to \$199,999	2.9%	\$500 to \$749	22.6%
\$200,000 to \$299,999	1.2%	\$750 to \$999	2.2%
\$300,000 to \$499,999	0.6%	\$1,000 to \$1,499	0.0%
\$500,000 to \$999,999	0.2%	\$1,500 or more	3.3%
\$1,000,000 or more	0.0%	No cash rent	7.7%
Median Value: \$71,400		Median Rent: \$409	

\* As of 2000 Census

### UNEMPLOYMENT RATE: April '08 – March '09



### Educational Attainment \*

(percentage of population 25 and older who have earned)

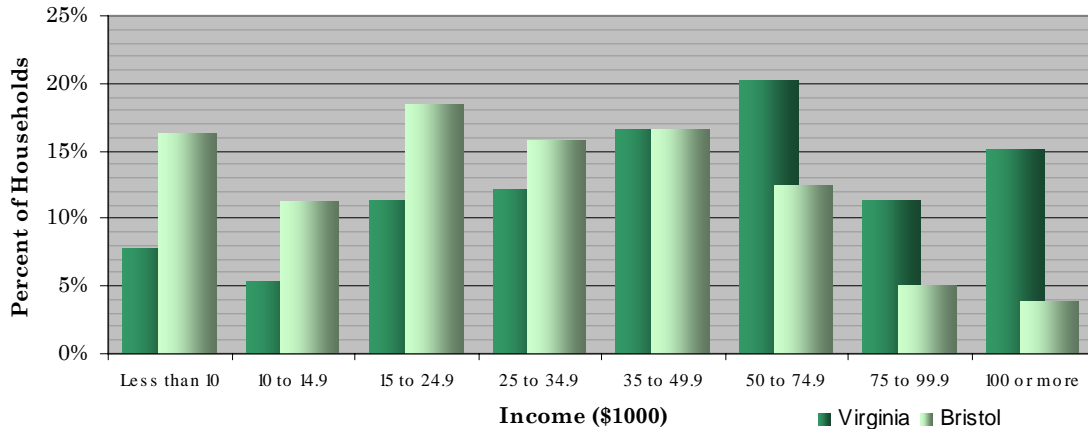
No Diploma	High School Diploma (or GED)	Some College (no degree)	Associate's Degree	Bachelor's Degree (or higher)
27.6%	29.3%	19.8%	6.3%	12.6%

\* As of 2000 Census

# A Quick Look at...

## City of Bristol, Virginia

Household Income (2000 Census)



Median Income (2007): \$59,575 Virginia \$33,429 Bristol City

Employment by Sector (3 <sup>rd</sup> Quarter 2008)		Employment by Occupation (2000 Census)	
Natural Resources and Mining	0.6%	Management and professional	26.6%
Construction	4.2%	Service	13.0%
Manufacturing	14.9%	Sales and office	31.5%
Trade, Transportation and Utilities	27.2%	Farming, fishing, and forestry	0.3%
Information	2.4%	Construction	7.3%
Financial Activities	3.0%	Production, transportation, and material moving	21.2%
Professional and Business Services	14.1%		
Education and Health Services	9.7%		
Leisure and Hospitality	15.2%		
Other Services	3.4%		
Public Administration	5.4%		
* Information unavailable		Total employment: 12,701	

Average Weekly Wage By Sector

(3rd Quarter 2008)

