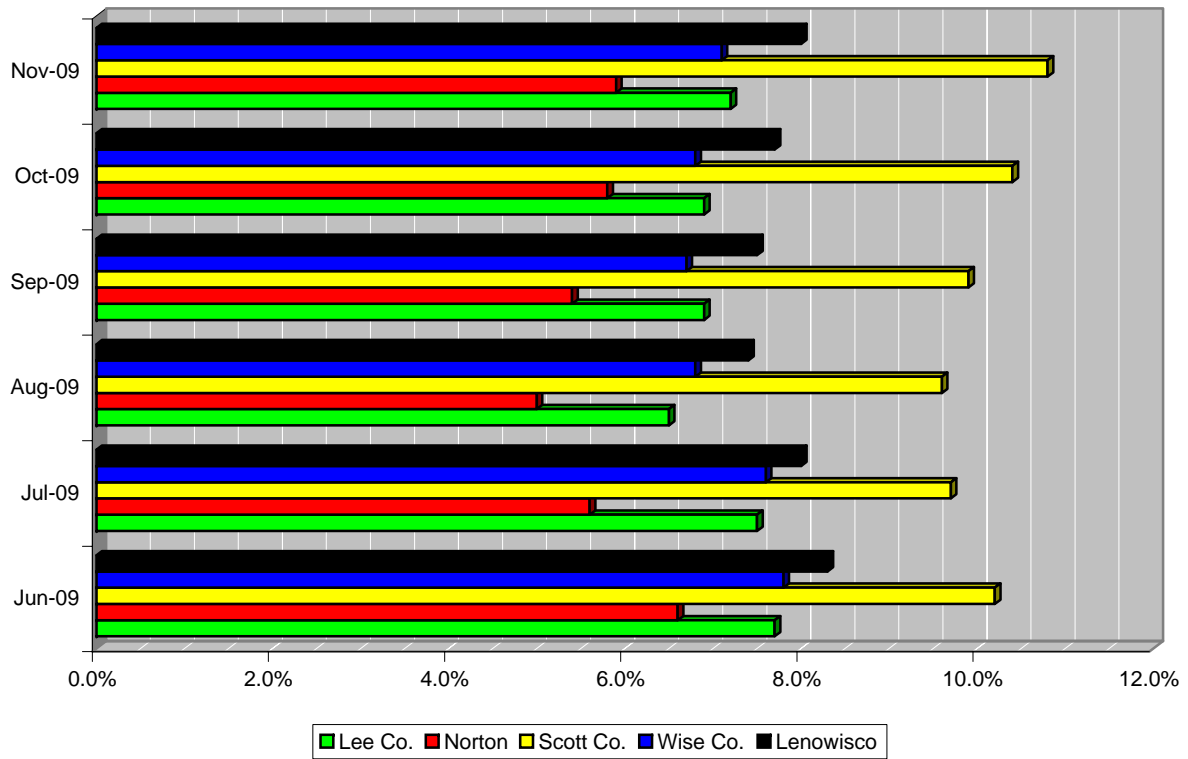


PD/County	Jun-09	Jul-09	Aug-09	Sep-09	Oct-09	Nov-09
Lee Co.	7.7%	7.5%	6.5%	6.9%	6.9%	7.2%
Norton	6.6%	5.6%	5.0%	5.4%	5.8%	5.9%
Scott Co.	10.2%	9.7%	9.6%	9.9%	10.4%	10.8%
Wise Co.	7.8%	7.6%	6.8%	6.7%	6.8%	7.1%
Lenowisco	8.3%	8.0%	7.4%	7.5%	7.7%	8.0%

**LENOWISCO PD: UNEMPLOYMENT RATES BY COUNTY/CITY**



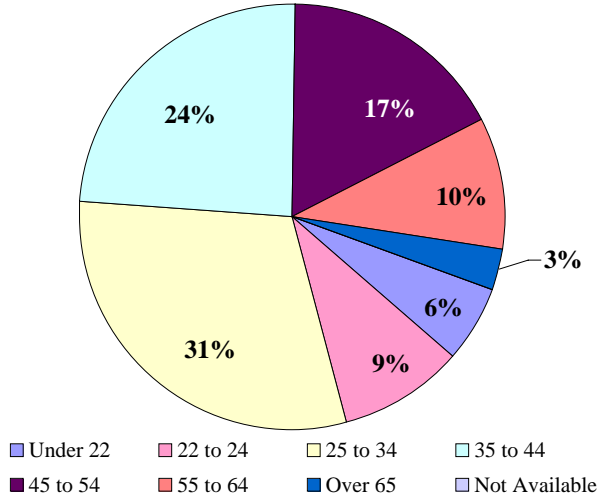
## Characteristics of the Insured Unemployed

**LENOWISCO PD, November 2009**

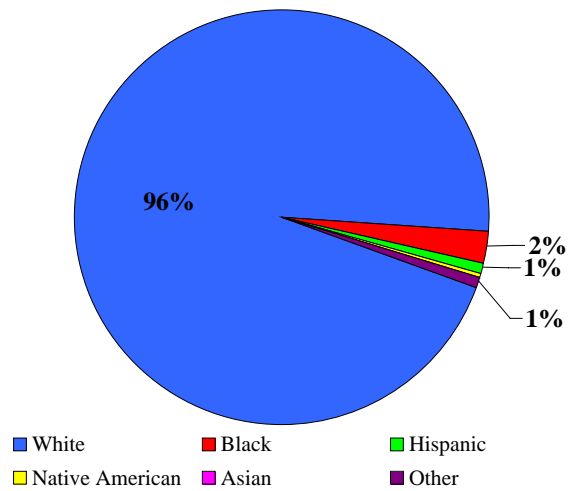
**Civilian Workforce: 40,438    Unemployed: 8.0%**

**Unemployment by Gender: Male: 70%    Female: 30%**

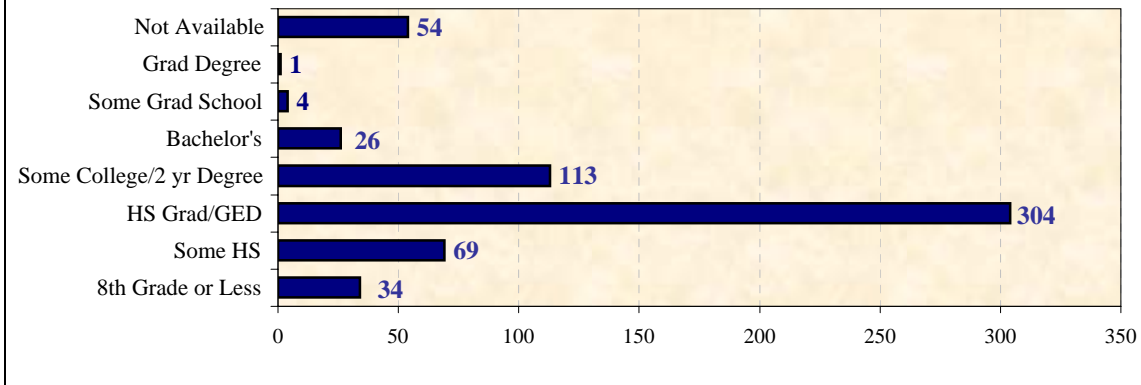
**Unemployment by Age**



**Unemployment by Race**



**Unemployment by Educational Attainment**



Source: Virginia Employment Commission

Compiled by: Virginia Economic Bridge, January 2010