

A Quick Look at...

Wise County, Virginia



Location: 36.97456 N, 82.62167 W

Size: 407.5 sq. miles

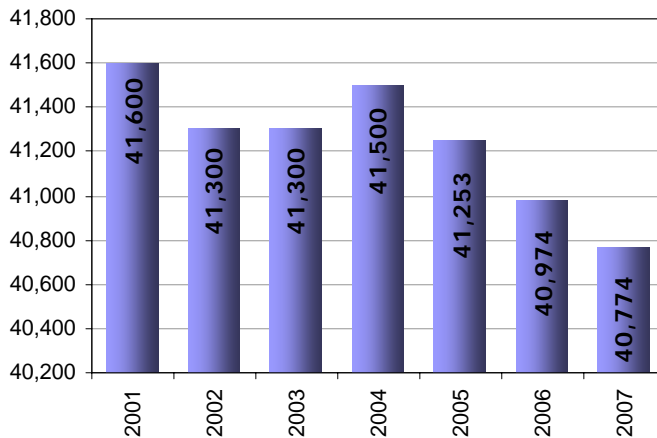
Population: 40,774

Population Density: 100.1 people/sq. mile

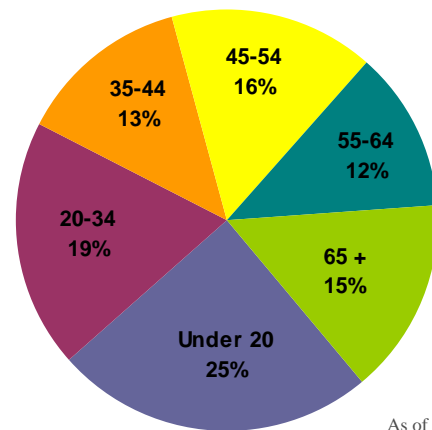
Towns & Communities:

Andover, Appalachia, Big Stone Gap, Coeburn, East Stone Gap, Exeter, Pound, Saint Paul, Stonega, Wise

Population

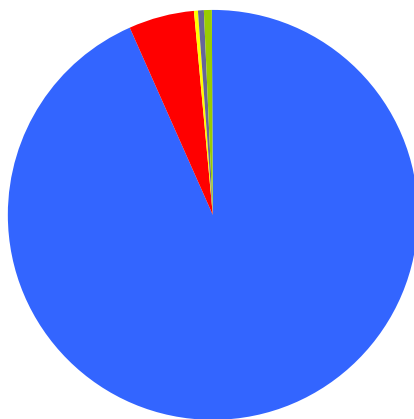


Population by Age



As of 2007

Median Age: 38.8



Population By Race

- 93.4% White
- 5.3% Black/African American
- 0.2% American Indian/Alaska Native
- 0.4% Asian
- 0.0% Native Pacific Islander
- 0.6% Some other race

As of 2007

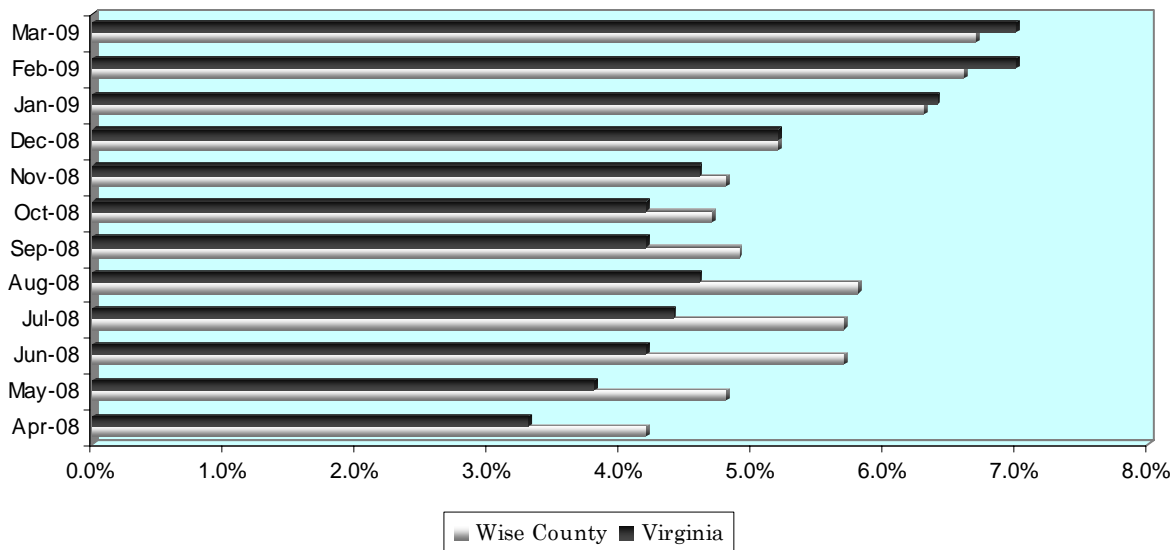
A Quick Look at...

Wise County, Virginia

Housing Statistics*			
Value (owner occupied)		Gross Rent (renter occupied)	
7,744 units		3,904 units	
Less than \$50,000	34.3%	Less than \$200	11.6%
\$50,000 to \$99,999	46.4%	\$200 to \$299	18.0%
\$100,000 to \$149,999	13.1%	\$300 to \$499	39.8%
\$150,000 to \$199,999	3.5%	\$500 to \$749	10.6%
\$200,000 to \$299,999	1.9%	\$750 to \$999	1.4%
\$300,000 to \$499,999	0.4%	\$1,000 to \$1,499	0.7%
\$500,000 to \$999,999	0.2%	\$1,500 or more	0.0%
\$1,000,000 or more	0.2%	No cash rent	18.0%
Median Value: \$65,700		Median Rent: \$353	

* As of 2000 Census

UNEMPLOYMENT RATE: April '08 – March '09



Educational Attainment *

(percentage of population 25 and older who have earned)

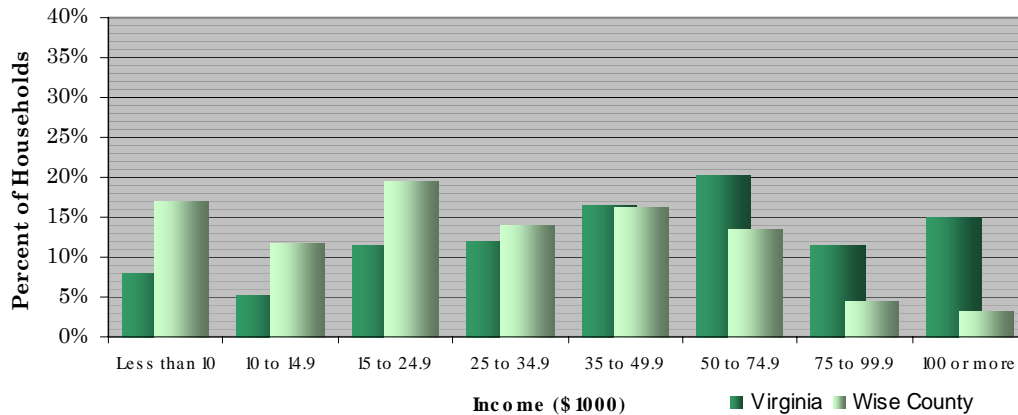
No Diploma	High School Diploma (or GED)	Some College (no degree)	Associate's Degree	Bachelor's Degree (or higher)
37.4%	29.9%	16.6%	5.2%	10.9%

* As of 2000 Census

A Quick Look at...

Wise County, Virginia

Household Income (2000 Census)



Median Income (2007): \$59,575 Virginia \$32,175 Wise County.

Employment by Sector (3 rd Quarter 2008)		Employment by Occupation (2000 Census)	
Natural Resources and Mining	13.6%	Management and professional	26.8%
Construction	4.8%	Service	15.5%
Manufacturing	2.7%	Sales and office	24.3%
Trade, Transportation and Utilities	19.1%	Farming, fishing, and forestry	0.8%
Information	0.9%	Construction	17.3%
Financial Activities	2.6%	Production, transportation, and material moving	15.4%
Professional and Business Services	10.8%		
Education and Health Services	25.4%		
Leisure and Hospitality	7.0%		
Other Services	1.9%		
Public Administration	11.4%		
* Information unavailable		Total employment: 14,371	

Average Weekly Wage By Sector

(3rd Quarter 2008)

