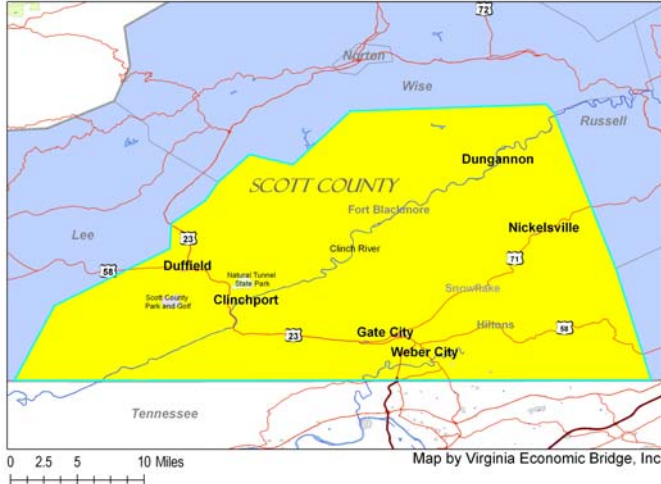


A Quick Look at...

Scott County, Virginia



Location: 36.71862 N, 82.60145 W

Size: 538 sq. miles

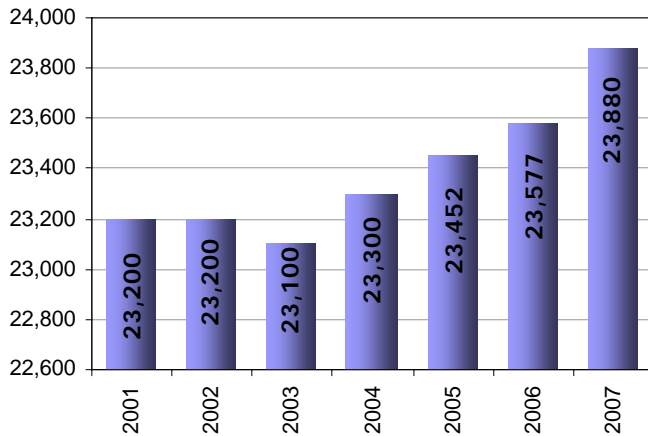
Population: 23,880

Population Density: 44.4 people/sq. mile

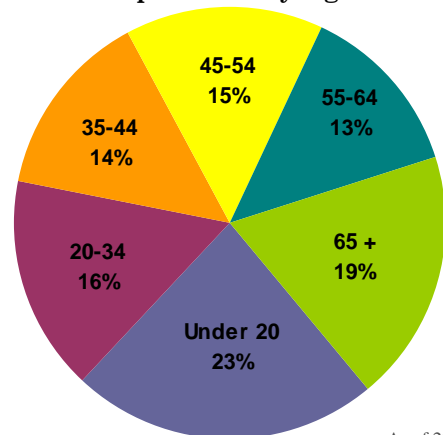
Towns & Communities:

Clinchport, Duffield, Dungannon, Fort Blackmore, Gate City, Hiltons, Nickelsville, Weber City, Snowflake, Yuma

Population

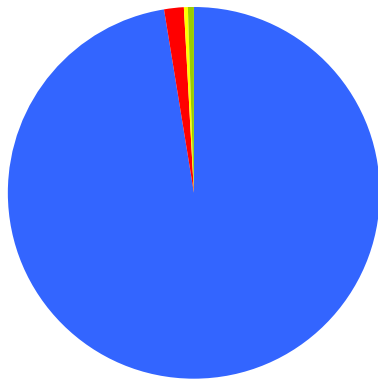


Population by Age



As of 2007

Median Age: 41.9



Population By Race

- 97.4% White
- 1.8% Black/African American
- 0.2% American Indian/Alaska Native
- 0.1% Asian
- 0.0% Native Pacific Islander
- 0.5% Some other race

As of 2007

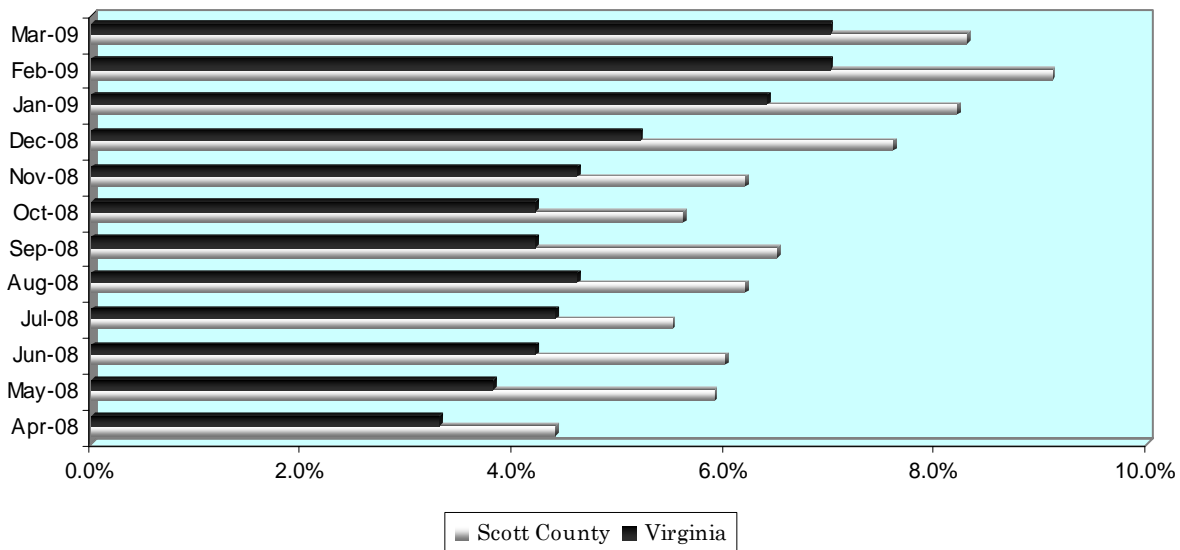
A Quick Look at...

Scott County, Virginia

Housing Statistics*			
Value (owner occupied)		Gross Rent (renter occupied)	
4,263 units		1,850 units	
Less than \$50,000	28.8%	Less than \$200	12.6%
\$50,000 to \$99,999	50.7%	\$200 to \$299	17.2%
\$100,000 to \$149,999	12.9%	\$300 to \$499	36.6%
\$150,000 to \$199,999	5.0%	\$500 to \$749	7.9%
\$200,000 to \$299,999	1.7%	\$750 to \$999	1.0%
\$300,000 to \$499,999	0.5%	\$1,000 to \$1,499	0.4%
\$500,000 to \$999,999	0.2%	\$1,500 or more	0.0%
\$1,000,000 or more	0.2%	No cash rent	24.3%
Median Value: \$69,100		Median Rent: \$335	

* As of 2000 Census

UNEMPLOYMENT RATE: April '08 – March '09



Educational Attainment *

(percentage of population 25 and older who have earned)

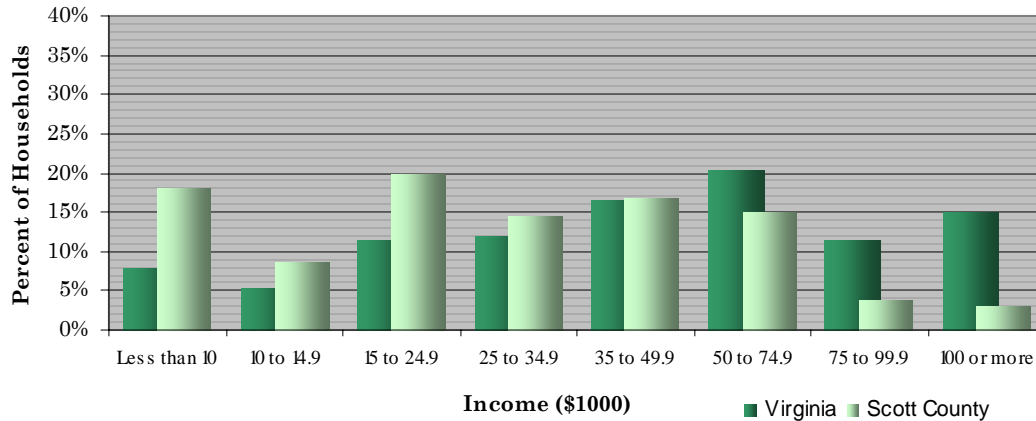
No Diploma	High School Diploma (or GED)	Some College (no degree)	Associate's Degree	Bachelor's Degree (or higher)
35.6%	36.3%	15.5%	4.3%	8.4%

* As of 2000 Census

A Quick Look at...

Scott County, Virginia

Household Income (2000 Census)



Income (\$1000) ■ Virginia ■ Scott County
 Median Income (2007): \$59,575 Virginia \$31,044 Scott County.

Employment by Sector (3 rd Quarter 2008)		Employment by Occupation (2000 Census)	
Natural Resources and Mining	1.1%	Management and professional	21.3%
Construction	2.3%	Service	14.1%
Manufacturing	15.0%	Sales and office	24.5%
Trade, Transportation and Utilities	19.8%	Farming, fishing, and forestry	1.4%
Information	1.8%	Construction	14.5%
Financial Activities	2.8%	Production, transportation, and material moving	23.4%
Professional and Business Services	7.5%		
Education and Health Services	30.3%		
Leisure and Hospitality	9.3%		
Other Services	3.7%		
Public Administration	6.4%		
* Information unavailable		Total employment: 5,007	

Average Weekly Wage By Sector

(3rd Quarter 2008)

