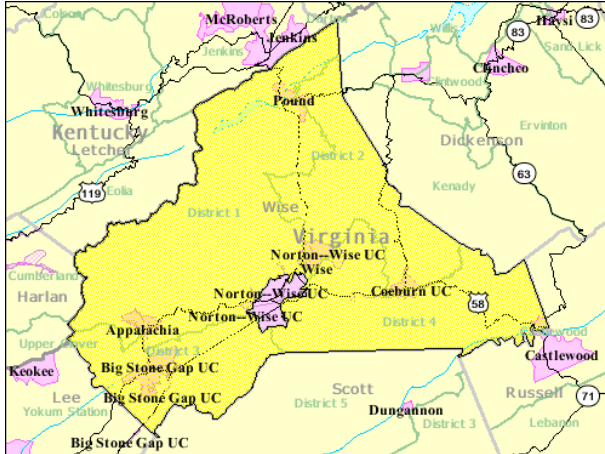


A Quick Look at...

City of Norton, Virginia



U.S. Census Bureau

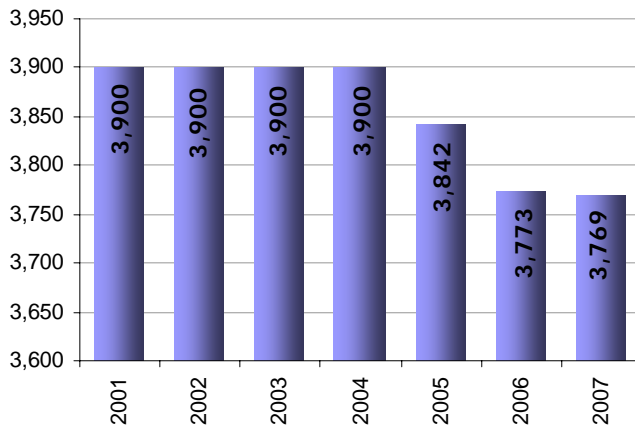
Location: 36.937797 N, 82.624923 W

Size: 6.83 sq. miles

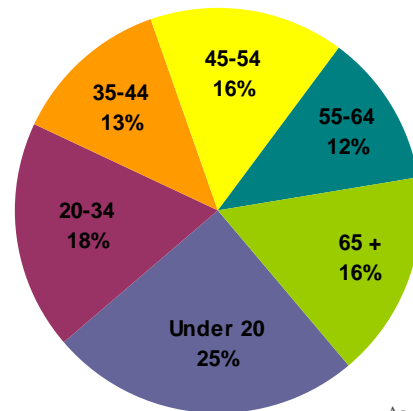
Population: 3,769

Population Density: 551.8 people/sq. mile

Population

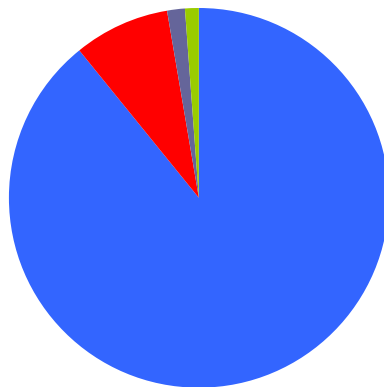


Population by Age



As of 2007

Median Age: 39.2



Population By Race

- 89.1% White
- 8.2% Black/African American
- 0.1% American Indian/Alaska Native
- 1.6% Asian
- 0.1% Native Pacific Islander
- 1.0% Some other race

As of 2007

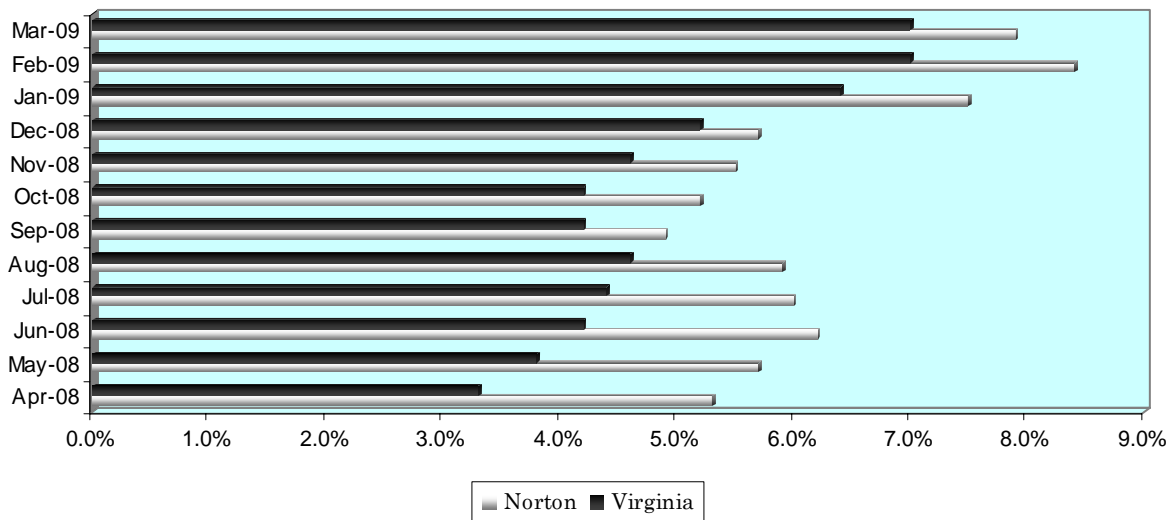
A Quick Look at...

City of Norton, Virginia

Housing Statistics*			
Value (owner occupied)		Gross Rent (renter occupied)	
745 units		762 units	
Less than \$50,000	33.8%	Less than \$200	25.9%
\$50,000 to \$99,999	50.7%	\$200 to \$299	13.5%
\$100,000 to \$149,999	7.0%	\$300 to \$499	39.0%
\$150,000 to \$199,999	3.1%	\$500 to \$749	11.0%
\$200,000 to \$299,999	5.4%	\$750 to \$999	2.1%
\$300,000 to \$499,999	0.0%	\$1,000 to \$1,499	0.0%
\$500,000 to \$999,999	0.0%	\$1,500 or more	0.0%
\$1,000,000 or more	0.0%	No cash rent	8.5%
Median Value: \$62,800		Median Rent: \$347	

* As of 2000 Census

UNEMPLOYMENT RATE: April '08 – March '09



Educational Attainment *

(percentage of population 25 and older who have earned)

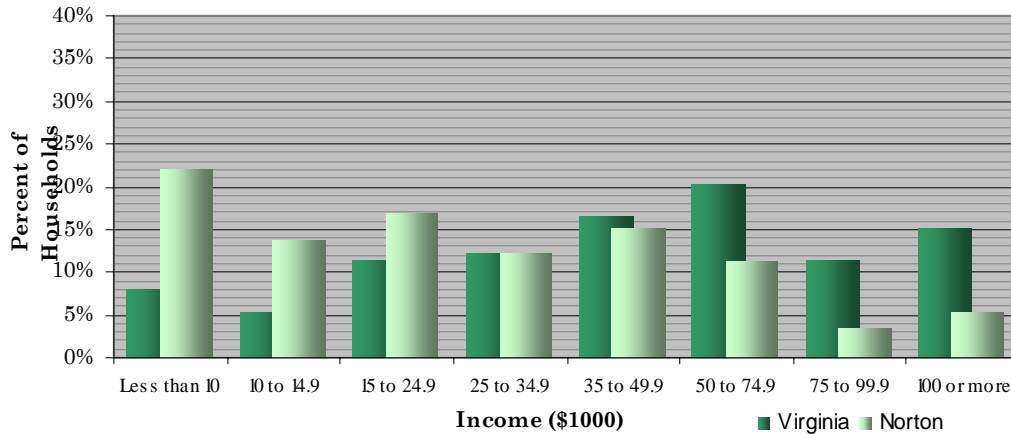
No Diploma	High School Diploma (or GED)	Some College (no degree)	Associate's Degree	Bachelor's Degree (or higher)
33.5%	26.8%	20.3%	5.3%	14%

* As of 2000 Census

A Quick Look at...

City of Norton, Virginia

Household Income (2000 Census)



Median Income (2007): \$59,575 Virginia \$30,654 Norton City.

Employment by Sector (3 rd Quarter 2008)		Employment by Occupation (2000 Census)	
Natural Resources and Mining	2.6%	Management and professional	27.0%
Construction	2.6%	Service	20.6%
Manufacturing	3.9%	Sales and office	27.6%
Trade, Transportation and Utilities	25.5%	Farming, fishing, and forestry	0.7%
Information	7.4%	Construction	9.7%
Financial Activities	2.5%	Production, transportation, and material moving	14.4%
Professional and Business Services	4.3%		
Education and Health Services	33.2%		
Leisure and Hospitality	9.9%		
Other Services	1.4%		
Public Administration	6.8%		
* Information unavailable		Total employment: 4,152	

Average Weekly Wage By Sector

(3rd Quarter 2008)

