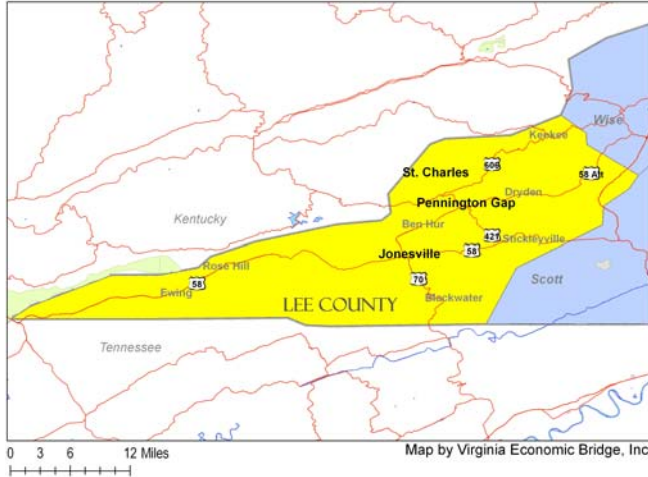


A Quick Look at...

Lee County, Virginia



Location: 36.70707 N, 83.12899 W

Size: 438 sq. miles

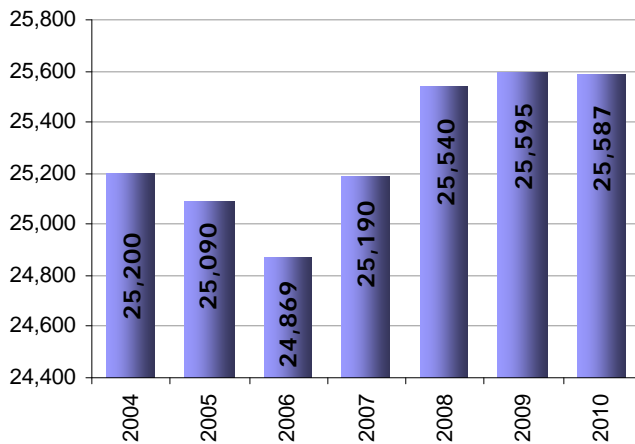
Population: 25,587

Population Density: 58.4 people/sq. mile

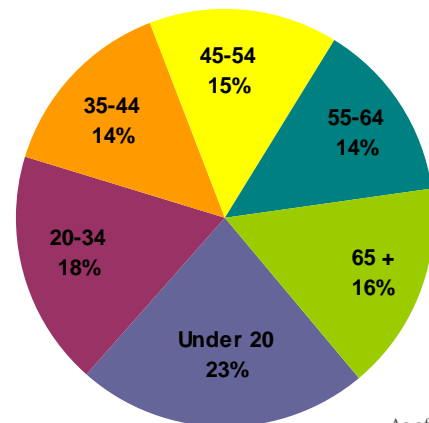
Towns & Communities:

Ben Hur, Blackwater, Dryden, Ewing, Jonesville, Keokee, Pennington Gap, Rose Hill, Saint Charles, Stickleyville

Population

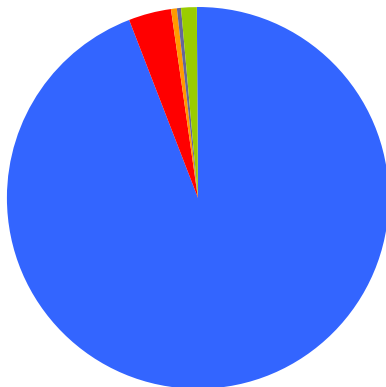


Population by Age



As of 2010

Median Age: 41.2



Population By Race

- 94.2% White
- 3.7% Black/African American
- 0.4% American Indian/Alaska Native
- 0.2% Asian
- 0.0% Native Pacific Islander
- 1.5% Some other race

As of 2010

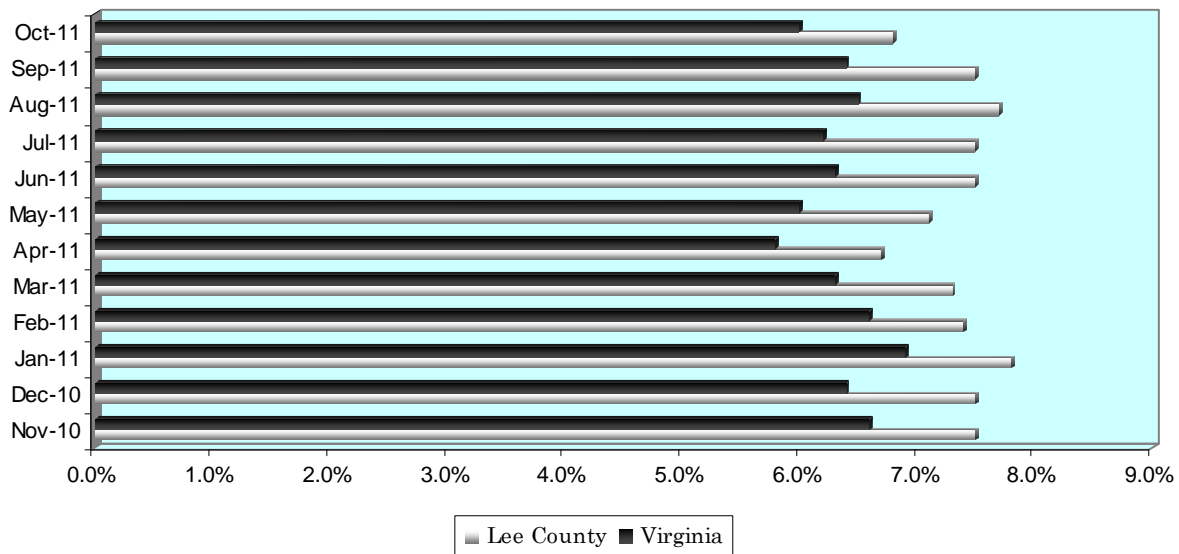
A Quick Look at...

Lee County, Virginia

Housing Statistics*			
Value (owner occupied)		Gross Rent (renter occupied)	
7,046 units		2,598 units	
Less than \$50,000	30.6%	Less than \$200	6.0%
\$50,000 to \$99,999	35.4%	\$200 to \$299	9.9%
\$100,000 to \$149,999	18.6%	\$300 to \$499	42.9%
\$150,000 to \$199,999	7.0%	\$500 to \$749	22.4%
\$200,000 to \$299,999	4.5%	\$750 to \$999	0.8%
\$300,000 to \$499,999	1.6%	\$1,000 to \$1,499	0.2%
\$500,000 to \$999,999	2.0%	\$1,500 or more	0.0%
\$1,000,000 or more	0.4%	No cash rent	17.8%
Median Value: \$73,300		Median Rent: \$410	

* As of 2005-2009 American Community Survey

UNEMPLOYMENT RATE: November '10 – October '11



Educational Attainment *

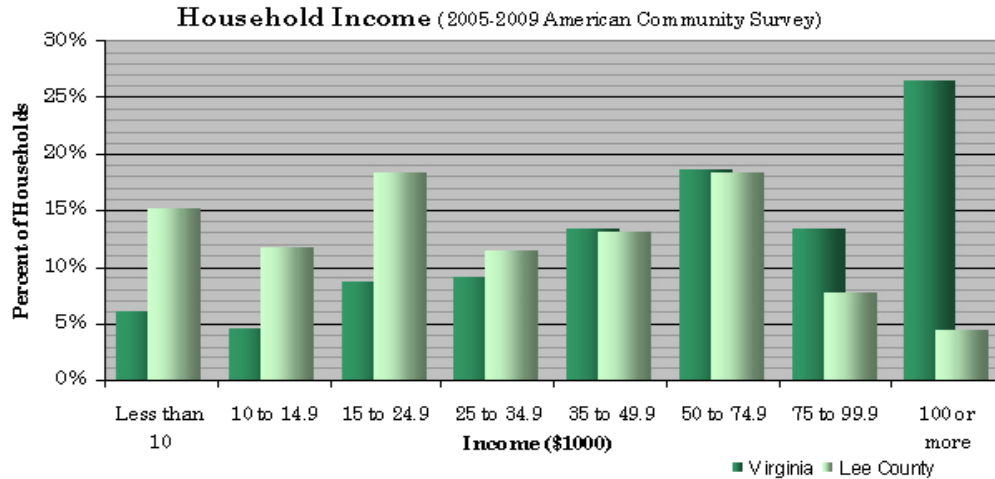
(percentage of population 25 and older who have earned)

No Diploma	High School Diploma (or GED)	Some College (no degree)	Associate's Degree	Bachelor's Degree (or higher)
28.7%	32.5%	18.6%	8.1%	12.0%

* As of 2005-2009 American Community Survey

A Quick Look at...

Lee County, Virginia



Median Income: \$60,316 Virginia \$29,889 Lee County

Employment by Sector (1 st Quarter 2011)		Employment by Occupation (05-09 ACS)	
Natural Resources and Mining	5.6%	Management and professional	22.6%
Construction	7.2%	Service	16.0%
Manufacturing	2.3%	Sales and office	27.4%
Trade, Transportation and Utilities	21.1%	Farming, fishing, and forestry	1.4%
Information	0.7%	Construction	14.6%
Financial Activities	2.9%	Production, transportation, and material moving	18.1%
Professional and Business Services	7.7%		
Education and Health Services	33.7%		
Leisure and Hospitality	6.3%		
Other Services	1.5%		
Public Administration	11.1%		
* Information unavailable		Total employment: 5,276	

Average Weekly Wage By Sector (1st Quarter 2011)

